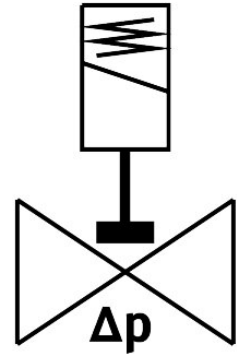


# Solenoid valve

## VZWP-L-M22C-N14-130-3AP4-40

Part number: 1489990

FESTO



 General operating condition

## Data sheet

| Feature                          | Value  |
|----------------------------------|--|
| Design                           | Piloted piston poppet valve  |
| Type of actuation                | Electrical   |
| Sealing principle                | Soft   |
| Mounting position                | Coil on top (preferred)  |
| Type of mounting                 | Inline installation  |
| Connection Process valve         | 1/4 NPT  |
| Electrical connection            | Plug<br>To EN 175301-803<br>Square design  |
| Nominal size                     | 13 mm  |
| Valve function                   | 2/2-way, single solenoid, closed   |
| Manual override                  | None   |
| Flow direction                   | Non-reversible   |
| Medium                           | Compressed air to ISO 8573-1:2010 [7:4:4]<br>Inert gases<br>Neutral fluids<br>Other media on request |
| Nominal pressure PN              | 40   |
| Pressure difference              | 0.05 MPa   |
| Pressure difference              | 0.5 bar  |
| Pressure difference              | 7.25 psi   |
| Characteristic coil data         | 230 V AC: 50/60 Hz, pick-up power 10.5 VA, holding power 7.6 VA                                      |
| Insulation material class        | H  |
| Permissible voltage fluctuations | +/-10%   |
| Duty cycle                       | 100%   |
| Type of piloting                 | Piloted  |
| Symbol                           | 00992974   |
| Medium pressure                  | 0.05 MPa ... 4 MPa   |
| Medium pressure                  | 0.5 bar ... 40 bar   |
| Medium pressure                  | 7.25 psi ... 580 psi   |
| Max. viscosity                   | 22 mm <sup>2</sup> /s  |

| <b>Feature</b>  | <b>Value</b>                               |
|---|--|
| Media temperature                                     | -10 °C ... 80 °C                           |
| Ambient temperature                                   | -10 °C ... 35 °C                           |
| Leakage rate to EN 12266-1                            | A  |
| Flow rate Kv  | 1.5 m <sup>3</sup> /h                      |
| Standard nominal flow rate (standardised to DIN 1343) | 1600 l/min                                 |
| Switching time on                                     | 100 ms                                     |
| Switching time off                                    | 250 ms                                     |
| Note on materials                                     | RoHS compliant                             |
| LABS (PWIS) conformity                                | VDMA24364 zone III                         |
| Material housing                                      | Cast brass                                 |
| Material number housing                               | CW617N                                     |
| Material seals  | NBR  |
| Material screws                                       | High-alloy stainless steel                 |
| Material number screw                                 | 1,4301                                     |
| Product weight  | 600 g                                      |
| CE mark (see declaration of conformity)               | To EU Low Voltage Directive                |
| UKCA marking (see declaration of conformity)          | To UK regulations for electrical equipment |
| Degree of protection                                  | IP65                                       |
| Corrosion resistance class CRC                        | 1 - Low corrosion stress                   |