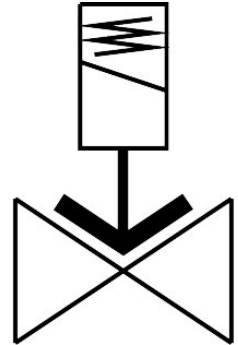


Solenoid valve

VZWF-B-L-M22C-G12-135-V-2AP4-10-R1

FESTO

Part number: 1492248



[PDF](#) General operating condition

Data sheet

| Feature | Value |
|----------------------------------|--|
| Design | Diaphragm valve Force pilot operated |
| Type of actuation | Electric |
| Sealing principle | Soft |
| Mounting position | Solenoid vertical |
| Type of mounting | In-line installation |
| Connection Process valve | G1/2 |
| Electrical connection | Plugs To EN 175301-803 Square design |
| Nominal size | 13.5 mm |
| Valve function | 2/2-way, closed, monostable |
| Manual override | None |
| Flow direction | Non-reversible |
| Medium | Compressed air to ISO 8573-1:2010 [7:-:-] Inert gases Mineral oil Water Neutral fluids Other media on request |
| Nominal pressure PN | 40 |
| Pressure difference | 0 MPa |
| Pressure difference | 0 bar |
| Pressure difference | 0 psi |
| Characteristic coil data | 110 V AC: 50/60 Hz, pick-up power 19.0 VA, holding power 16.0 VA |
| Permissible voltage fluctuations | +/- 10 % |
| Symbol | 00992976 |
| Medium pressure | 0 MPa ... 1 MPa |
| Medium pressure | 0 bar ... 10 bar |
| Medium pressure | 0 psi ... 145 psi |
| Max. viscosity | 22 mm ² /s |
| Media temperature | -10 °C ... 80 °C |

| Feature | Value |
|---|--|
| Ambient temperature | -10 °C ... 35 °C |
| Leakage rate to EN 12266-1 | A |
| Flow rate Kv | 2.5 m ³ /h |
| Standard nominal flow rate (standardised to DIN 1343) | 2660 l/min |
| Switching time on | 130 ms |
| Switching time off | 180 ms |
| Note on materials | RoHS-compliant |
| LABS (PWIS) conformity | VDMA24364 zone III |
| Material housing | Stainless steel casting |
| Material number housing | 1.4581 |
| Material seals | FPM |
| Material screws | High-alloy stainless steel |
| Material number screw | 1.4301 |
| Product weight | 1000 g |
| CE mark (see declaration of conformity) | To EU Low Voltage Directive |
| UKCA marking (see declaration of conformity) | To UK regulations for electrical equipment |
| Degree of protection | IP65 |
| Corrosion resistance class CRC | 3 - high corrosion stress |