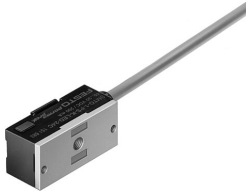


# Proximity sensor SMT0-1-PS-K-LED-24-C

Part number: 151683

FESTO



 [General operating condition](#)

## Data sheet

Feature	Value
Design	Block design
Based on standard	EN 60947-5-2
Symbol	00991152
Approval	RCM trademark
CE mark (see declaration of conformity)	To EU EMC Directive In accordance with EU RoHS Directive
UKCA marking (see declaration of conformity)	To UK RoHS instructions
Note on materials	RoHS-compliant
Measured variable	Position
Measuring principle	Magneto-inductive
Ambient temperature	-25 °C ... 70 °C
Repetition accuracy	0.2 mm
Switching output	PNP
Switching element function	N/O contact
Hysteresis	0.1 mm ... 1.5 mm
Switch-on time	≤1 ms
Switch-off time	≤1 ms
Max. switching frequency	1000 Hz
Max. output current	200 mA
Max. switching capacity DC	6 W
Voltage drop	≤3 V
Inductive protective circuit	Adapted to MZ, MY, ME coils
Off-state current	≤0.01 mA
Short circuit current rating	Pulsed
Overload protection	Available
Operational voltage range DC	10 V ... 30 V
Residual ripple	10 %
Reverse polarity protection	For all electrical connections
Electrical connection 1, connection type	Cable
Electrical connection 1, connector system	Open end
Electrical connection 1, number of connections/cores	3
Connection outlet orientation	In-line
Cable length	2.5 m
Cable characteristic	Standard
Cable sheath colour	Grey
Material cable sheath	PVC

<b>Feature</b>	<b>Value</b>
Material insulating sheath	PVC
Wire ends	Wire ferrule
Type of mounting	With accessories
Mounting position	optional
Product weight	85 g
Housing colour	Black
Material housing	PET Die-cast zinc
Switching status indication	Yellow LED
Ambient temperature with moving cable	-5 °C ... 70 °C
Degree of protection	IP67
LABS (PWIS) conformity	VDMA24364-B2-L