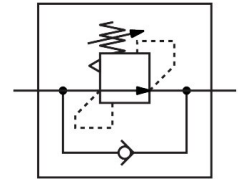


Differential pressure regulator LRL-1/4-QS-6

Part number: 153514

FESTO



 General operating condition

Data sheet

| Feature | Value |
|------------------------------------|--|
| Controller function | Differential pressure constant With return flow function |
| Pneumatic connection, port 1 | R1/4 |
| Pneumatic connection, port 2 | QS-6 |
| Type of mounting | Screw-in |
| Nominal flow rate open | 241 l/min |
| Pressure regulation range | 2 bar ... 6 bar |
| Inlet pressure 1 | 0 MPa ... 0.9 MPa |
| Inlet pressure 1 | 0 bar ... 9 bar |
| Inlet pressure 1 | 0 psi ... 130.5 psi |
| Ambient temperature | 0 °C ... 60 °C |
| Material housing | PBT-reinforced |
| Operating medium | Compressed air to ISO 8573-1:2010 [7:-:-] |
| Actuator lock | Counter-locking |
| Mounting position | optional |
| Design | Directly actuated piston regulator With through compressed air supply |
| Symbol | 00991535 |
| Nominal flow rate closed | 240 l/min |
| Note on operating and pilot medium | Lubricated operation possible (in which case lubricated operation will always be required) |
| LABS (PWIS) conformity | VDMA24364-B1/B2-L |
| Product weight | 38 g |
| Material screwed plug | Nickel-plated brass |
| Note on materials | RoHS-compliant |
| Material thread seal | PTFE |