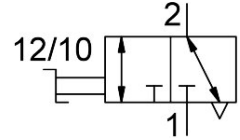


Shut-off valve HE-3-1/4-QS-1/4-U

Part number: 153986

FESTO



[PDF General operating condition](#)

Data sheet

Feature	Value
Valve function	3/2 bistable
Selection of additional functions	With exhaust function
Pneumatic connection, port 1	1/4 NPT
Pneumatic connection, port 2	QS-1/4
Type of actuation	Manual
Type of mounting	Direct mounting via through-hole Direct mounting via thread
Standard nominal flow rate (standardised to DIN 1343)	340.2 l/min
Nominal size	3.2 mm
Operating pressure	-0.095 MPa ... 1 MPa
Operating pressure	-0.95 bar ... 10 bar
Ambient temperature	0 °C ... 60 °C
Material housing	PBT-reinforced
Operating medium	Compressed air to ISO 8573-1:2010 [7:-:-]
Exhaust-air function	Without flow control option
Sealing principle	Soft
Mounting position	optional
Design	Piston gate valve
Type of piloting	Direct
Flow direction	Non-reversible
Symbol	00997329
Note on operating and pilot medium	Lubricated operation possible (in which case lubricated operation will always be required)
Corrosion resistance class CRC	2 - Moderate corrosion stress
LABS (PWIS) conformity	VDMA24364-B1/B2-L
Cleanroom suitability, measured according to ISO 14644-14	Class 4 according to ISO 14644-1
Media temperature	0 °C ... 60 °C
Product weight	35 g
Pneumatic connection, port 3	Not ducted
Material screwed plug	Nickel-plated brass
Note on materials	RoHS-compliant
Material seals	NBR