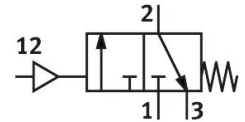
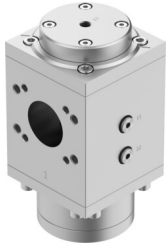


On/off valve PVEL-P-124-HP7

Part number: 1629205

FESTO



[General operating condition](#)

Data sheet

| Feature | Value |
|--|--|
| Series | L |
| Nominal size DN | 54 |
| Design | Piston gate valve |
| Type of actuation | Pneumatic |
| Sealing principle | Soft |
| Exhaust-air function | Without flow control option |
| Type of reset | Mechanical spring |
| Type of piloting | Direct |
| Symbol | 00991173 |
| Valve function | 3/2-way, closed, monostable |
| Operating pressure | 0 MPa ... 4.2 MPa |
| Operating pressure | 0 bar ... 42 bar |
| Pilot pressure | 9 bar ... 42 bar |
| lap | Underlap |
| Operating medium | Compressed air to ISO 8573-1:2010 [7:4:4] Inert gases |
| Note on operating and pilot medium | Lubricated operation possible (in which case lubricated operation will always be required) |
| Corrosion resistance class CRC | 2 - Moderate corrosion stress |
| Note on materials | RoHS-compliant |
| LABS (PWIS) conformity | VDMA24364 zone III |
| Media temperature | 5 °C ... 50 °C |
| Ambient temperature | 5 °C ... 50 °C |
| CE mark (see declaration of conformity) | In accordance with EU Pressure Equipment Directive |
| UKCA marking (see declaration of conformity) | to UK Pressure Equipment Regulations |
| Suitable for use with food | See supplementary material information |
| Mounting position | optional |
| Product weight | 7250 g |
| Pneumatic connection, port 3 | G1/2 |
| Pilot air port 12 | G1/4 |
| Pilot air supply | External |
| Material piston slide | Wrought aluminium alloy |
| Material seals | NBR PE |
| Material housing | Wrought aluminium alloy |