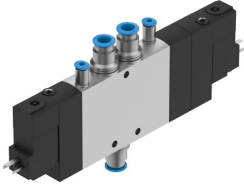


Solenoid valve CPE18-M3H-5/3ES-QS-8

Part number: 170328

FESTO



[General operating condition](#)

Data sheet

Feature	Value
Valve function	5/3 exhausted
Type of actuation	Electric
Construction width	18 mm
Standard nominal flow rate (standardised to DIN 1343)	780 l/min
pneumatic working port	QS-8
Operating voltage	230V AC
Operating pressure	-0.09 MPa ... 1 MPa
Operating pressure	-0.9 bar ... 10 bar
Design	Piston gate valve
Type of reset	Mechanical spring
Approval	c UL us - Recognized (OL)
Maritime classification	See certificate
CE mark (see declaration of conformity)	To EU Low Voltage Directive
UKCA marking (see declaration of conformity)	To UK regulations for electrical equipment
Certificate issuing authority	DNV-TAA000032X UL MH19482
Degree of protection	IP65 With plug socket To IEC 60529
Nominal size	8 mm
Exhaust-air function	With flow control option
Sealing principle	Soft
Mounting position	optional
Manual override	Detenting via accessory Non-detenting
Type of piloting	Pilot actuated
Pilot air supply	External
Flow direction	Reversible
Symbol	00991032
Valve position code	Inscription label holder
lap	Overlap
Pilot pressure	0.25 MPa ... 1 MPa
Pilot pressure	2.5 bar ... 10 bar
Switching time off	38 ms
Switching time on	20 ms
Duty cycle	100%
Max. positive test pulse with 0 signal	3300 µs

Feature	Value
Max. negative test pulse with 1 signal	3100 µs
Characteristic coil data	230 V AC: 50/60 Hz, pick-up power 3.0 VA, holding power 2.4 VA
Permissible voltage fluctuations	-15%/+10%
Operating medium	Compressed air to ISO 8573-1:2010 [7:4:4]
Note on operating and pilot medium	Lubricated operation possible (in which case lubricated operation will always be required)
Vibration resistance	Transport application test with severity level 2 to FN 942017-4 and EN 60068-2-6
Shock resistance	Shock test with severity level 2 to FN 942017-5 and EN 60068-2-27
Corrosion resistance class CRC	2 - Moderate corrosion stress
LABS (PWIS) conformity	VDMA24364-B1/B2-L
Media temperature	-5 °C ... 50 °C
Pilot medium	Compressed air to ISO 8573-1:2010 [7:4:4]
Ambient temperature	-5 °C ... 50 °C
Electrical connection	Type C
Type of mounting	With through-hole
Pilot exhaust port 82	M5
Pilot exhaust port 84	M5
Pilot air port 12	M5
Pilot air port 14	M5
Pneumatic connection, port 1	QS-8
Pneumatic connection, port 2	QS-8
Pneumatic connection, port 3	G1/4
Pneumatic connection, port 4	QS-8
Pneumatic connection, port 5	G1/4
Note on materials	RoHS-compliant
Material seals	NBR
Material housing	Die-cast aluminium