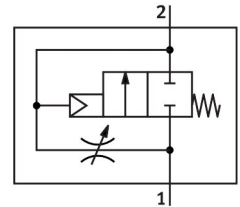


On/off valve HEL-D-MAXI

Part number: 170692

FESTO



General operating condition

Data sheet

Feature	Value
Exhaust-air function	With flow control option
Type of actuation	Pneumatic
Sealing principle	Soft
Mounting position	optional
Manual override	None
Design	Piston gate valve
Type of reset	Mechanical spring
Type of piloting	Direct
Flow direction	Non-reversible
Symbol	00991513
Valve function	2/2-way, closed, monostable
Operating pressure	0.3 MPa ... 1.6 MPa
Operating pressure	3 bar ... 16 bar
Operating medium	Compressed air to ISO 8573-1:2010 [7:4:4] Inert gases
Note on operating and pilot medium	Lubricated operation possible (in which case lubricated operation will always be required)
Corrosion resistance class CRC	2 - Moderate corrosion stress
LABS (PWIS) conformity	VDMA24364-B1/B2-L
Air purity class at output	Compressed air to ISO 8573-1:2010 [7:4:4] Inert gases
Media temperature	-10 °C ... 60 °C
Ambient temperature	-10 °C ... 60 °C
Product weight	394 g
Type of mounting	In-line installation
Note on materials	RoHS-compliant
Material seals	NBR
Material housing	Die-cast aluminium