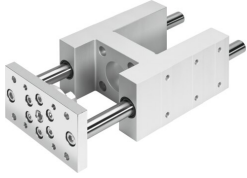


# Guide unit EAGF-V2-KF-80-200

Part number: 1725847

FESTO



 General operating condition

## Data sheet

Feature	Value
Size	80
Stroke	200 mm
Reversing backlash theoretical	0 µm
Mounting position	optional
Guide	Recirculating ball bearing guide
Design	Guidance
Corrosion resistance class CRC	0 - No corrosion stress
LABS (PWIS) conformity	VDMA24364-B2-L
Ambient temperature	-20 °C ... 80 °C
Max. force Fy	2300 N
Max. force Fy static	3120 N
Max. force Fz	2300 N
Max. force Fz static	3120 N
Max. moment Mx	170 Nm
Max. torque Mx static	231 Nm
Max. moment My	191 Nm
Max. torque My static	259 Nm
Max. moment Mz	191 Nm
Max. torque Mz static	259 Nm
Displacement force	40 N
Moving mass	6682 g
Product weight	12037 g
Centre of gravity at 0 mm stroke	54 mm
Centre of gravity additional of moving mass per 10 mm	3.8 mm
Type of mounting	Via female thread
Note on materials	RoHS-compliant
Material guide component	Tempered steel
Material housing	Anodised
Material yoke plate	Steel