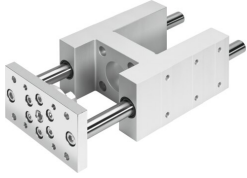


Guide unit EAGF-V2-KF-100-200

Part number: 1725851

FESTO



 General operating condition

Data sheet

Feature	Value
Size	100
Stroke	200 mm
Reversing backlash theoretical	0 µm
Mounting position	Any
Guide	Recirculating ball bearing guide
Design	Guidance
Corrosion resistance class CRC	0 - No corrosion stress
LABS (PWIS) conformity	VDMA24364-B2-L
Ambient temperature	-20 °C ... 80 °C
Max. force Fy	2300 N
Max. force Fy static	3120 N
Max. force Fz	2300 N
Max. force Fz static	3120 N
Max. moment Mx	198 Nm
Max. torque Mx static	268 Nm
Max. moment My	197 Nm
Max. torque My static	267 Nm
Max. moment Mz	197 Nm
Max. torque Mz static	267 Nm
Displacement force	40 N
Moving mass	7662 g
Product weight	14783 g
Centre of gravity at 0 mm stroke	47 mm
Centre of gravity additional of moving mass per 10 mm	3.6 mm
Type of mounting	With female thread
Note on materials	RoHS compliant
Material guide component	Tempered steel
Material housing	anodised
Material yoke plate	Steel