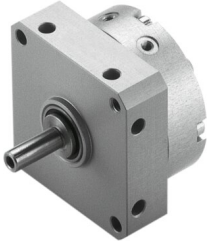


Semi-rotary drive DSM-10-240-P

Part number: 173194

FESTO



 [General operating condition](#)

Data sheet

Feature	Value
Size	10
Cushioning angle	0.5 deg
Swivel angle	0 deg ... 240 deg
Permissible stop radius	≥13 mm
Cushioning	Elastic cushioning rings/plates at both ends
Mounting position	optional
Mode of operation	Double-acting
Design	Vane
Position detection	Without
Symbol	00991265
Operating pressure	0.25 MPa ... 0.8 MPa
Operating pressure	2.5 bar ... 8 bar
Max. swivel frequency at 0.6 MPa (6 bar, 87 psi)	2 Hz
Repetition accuracy	1 deg
Operating medium	Compressed air to ISO 8573-1:2010 [7:4:4]
Note on operating and pilot medium	Lubricated operation possible (in which case lubricated operation will always be required)
Corrosion resistance class CRC	0 - No corrosion stress
LABS (PWIS) conformity	VDMA24364-B1/B2-L
Cleanroom suitability, measured according to ISO 14644-14	Class 6 according to ISO 14644-1
Ambient temperature	0 °C ... 60 °C
Max. stop force	60 N
Max. axial force	10 N
Max. radial force	30 N
Theoretical torque at 0.6 MPa (6 bar, 87 psi)	0.85 Nm
Permissible mass moment of inertia	0.0026 kgm ²
Product weight	140 g
Type of mounting	Via female thread
Pneumatic connection	M3
Note on materials	RoHS-compliant
Material drive shaft	High-alloy stainless steel
Material seals	TPE-U(PU)
Material housing	Anodised