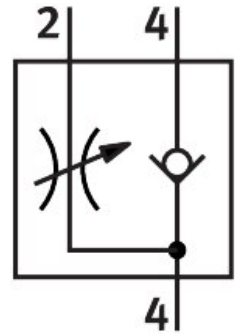


One-way flow control valve CPV10-BS-GRZ-V-M7

Part number: 185889

FESTO



 [General operating condition](#)

Data sheet

| Feature | Value |
|------------------------|-------------------|
| Symbol | 00991886 |
| LABS (PWIS) conformity | VDMA24364-B1/B2-L |
| Product weight | 30 g |
| Note on materials | RoHS-compliant |