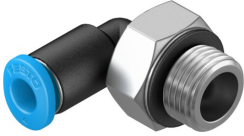


Push-in L-fitting QSML-G1/8-4

Part number: 186268

FESTO



 General operating condition

Data sheet

Feature	Value
Size	Mini
Nominal size	2.5 mm
Tubing insertion depth	11.6 mm
Type of seal on screwed plug	Sealing ring
Mounting position	optional
Design	L-shape
Size of pack	10
Design	Push-pull principle
Operating pressure complete temperature range	-0.095 MPa ... 0.6 MPa
Operating pressure complete temperature range	-0.95 bar ... 6 bar
Operating pressure complete temperature range	-13.775 psi ... 87 psi
Temperature-dependent operating pressure	-0.095 MPa ... 1.4 MPa
Temperature-dependent operating pressure	-0.95 bar ... 14 bar
Temperature-dependent operating pressure	-13.775 psi ... 203 psi
Operating medium	Compressed air to ISO 8573-1:2010 [7:-:-]
Note on operating and pilot medium	Lubricated operation possible
Corrosion resistance class CRC	1 - Low corrosion stress
LABS (PWIS) conformity	VDMA24364-B1/B2-L
Ambient temperature	-10 °C ... 80 °C
Nominal torque	5.4 Nm
Tolerance for nominal tightening torque	± 20%
Product weight	9 g
Type of mounting	External hexagon, A/F 13 mm
Pneumatic connection, port 1	Male thread G1/8
Pneumatic connection, port 2	For tubing outside diameter of 4 mm
Colour of release ring	Blue
Material screwed plug	Nickel-plated brass
Note on materials	RoHS-compliant
Material housing	PBT
Material release ring	POM
Material tubing seal	NBR
Material tubing clamp component	High-alloy stainless steel