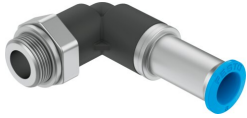


Push-in L-fitting, self-sealing QSKL-G1/4-8

Part number: 186308

FESTO



General operating condition

Data sheet

Feature	Value
Size	Standard
Nominal size	4.1 mm
Approved tubing type	PAN- PAN-MF- PAN-R- PAN-VO- PEN- PFAN- PLN- PTFEN- PUN- PUN-CM- PUN-DUO- PUN-H- PUN-H-DUO- PUN-S- PUN-S-DUO- PUN-VO-
Tubing insertion depth	18.2 mm
Type of seal on screwed plug	Sealing ring
Mounting position	optional
Design	L-shape
Size of pack	1
Design	Push-pull principle
Operating pressure complete temperature range	-0.095 MPa ... 0.6 MPa
Operating pressure complete temperature range	-0.95 bar ... 6 bar
Operating pressure complete temperature range	-13.775 psi ... 87 psi
Temperature-dependent operating pressure	-0.095 MPa ... 1.4 MPa
Temperature-dependent operating pressure	-0.95 bar ... 14 bar
Temperature-dependent operating pressure	-13.775 psi ... 203 psi
Operating medium	Compressed air to ISO 8573-1:2010 [7::-]
Note on operating and pilot medium	Lubricated operation possible
Corrosion resistance class CRC	1 - Low corrosion stress
LABS (PWIS) conformity	VDMA24364-B1/B2-L
Ambient temperature	-10 °C ... 80 °C
Nominal torque	9 Nm
Tolerance for nominal tightening torque	± 20%
Product weight	27 g
Type of mounting	External hexagon, size 17 mm
Pneumatic connection, port 1	Male thread G1/4

Feature	Value
Pneumatic connection, port 2	For tubing outside diameter of 8 mm
Colour of release ring	Blue
Material screwed plug	Nickel-plated brass
Note on materials	RoHS-compliant
Material housing	PBT
Material release ring	POM
Material tubing seal	NBR
Material tubing clamp component	High-alloy stainless steel