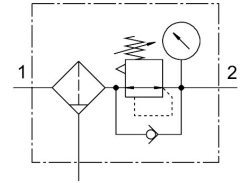



Filter regulator LFR-1/2-D-7-MAXI

Part number: 186495

FESTO



 General operating condition

Data sheet

Feature	Value
Size	Maxi
Series	D
Actuator lock	Rotary knob with detent
Mounting position	Vertical +/-5°
Grade of filtration	40 µm
Condensate drain	Manually rotating
Design	Filter regulator with pressure gauge
Max. condensate volume	80 ml
Bowl guard	Metal bowl guard
Symbol	00991589
Pressure gauge (ANALOG) or Pressure display (DIGITAL)	With pressure gauge
Operating pressure	0.1 MPa ... 1.6 MPa
Operating pressure	1 bar ... 16 bar
Pressure regulation range	0.5 bar ... 7 bar
Max. pressure hysteresis	0.4 bar
Standard nominal flow rate (standardised to DIN 1343)	9500 l/min
Operating medium	Inert gas
Corrosion resistance class CRC	2 - Moderate corrosion stress
LABS (PWIS) conformity	VDMA24364-B1/B2-L
Storage temperature	-10 °C ... 60 °C
Air purity class at output	Compressed air to ISO 8573-1:2010 [7:8:4] Inert gases
Media temperature	-10 °C ... 60 °C
Ambient temperature	-10 °C ... 60 °C
Product weight	1370 g
Type of mounting	With accessories
Pneumatic connection, port 1	G1/2
Pneumatic connection, port 2	G1/2
Note on materials	RoHS-compliant
Material housing	Die-cast zinc
Material bowl	PC