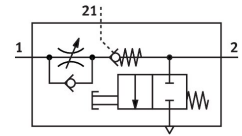


# One-way flow control valve VFOF-LE-BAH-G14-Q8

Part number: 1927030

FESTO



 [General operating condition](#)

## Data sheet

| Feature  | Value                                     |
|--|---|
| Valve function   | Exhaust air one-way flow control function |
| Selection of additional functions  | Actuated non-return valve                 |
| Pneumatic connection, port 1   | QS-8                                      |
| Pneumatic connection, port 2   | G1/4                                      |
| Type of actuation  | Manual                                    |
| Pilot air port 21  | QS-8                                      |
| Adjustment component   | Internal hexagon                          |
| Type of mounting   | Screw-in                                  |
| Standard nominal flow rate in flow control direction                                     | 590 l/min                                 |
| Standard nominal flow rate in blocked direction  | 310 l/min ... 540 l/min                   |
| Operating pressure   | 0.02 MPa ... 1 MPa                        |
| Operating pressure   | 0.2 bar ... 10 bar                        |
| Operating pressure   | 2.9 psi ... 145 psi                       |
| Pilot pressure   | 0.2 MPa ... 1 MPa                         |
| Pilot pressure   | 2 bar ... 10 bar                          |
| Pilot pressure   | 29 psi ... 145 psi                        |
| Ambient temperature  | -10 °C ... 60 °C                          |
| Material housing   | PBT                                       |
| Explosion protection   | Zone 2 (ATEX)<br>Zone 22 (ATEX)           |
| Mounting position  | optional                                  |
| Type act., cont. n.-r. func.   | Pneumatic                                 |
| Manual exhaust function  | Non-detenting                             |
| Symbol   | 00991958                                  |
| Rotatability   | 360°/no continuous swivelling permissible |
| Operating pressure complete temperature range  | 0.02 MPa ... 1 MPa                        |
| Operating pressure complete temperature range  | 0.2 bar ... 10 bar                        |
| Operating pressure complete temperature range  | 2.9 psi ... 145 psi                       |
| Standard flow rate in flow control direction 0.6->0 MPa (6->0 bar, 87->0 psi)            | 940 l/min                                 |
| Standard flow rate in non-return direction 0.6->0 MPa (6->0 bar, 87->0 psi) actuated     | 830 l/min ... 1000 l/min                  |
| Standard flow rate in non-return direction 0.6->0 MPa (6->0 bar, 87->0 psi) non-actuated | 840 l/min ... 1000 l/min                  |
| Standard nominal flow rate in non-return direction actuated                              | 315 l/min ... 540 l/min                   |
| Standard nominal flow rate in non-return direction non-actuated                          | 310 l/min ... 540 l/min                   |

| Feature  | Value  |
|--|--|
| Switching time off                             | 11 ms  |
| Switching time on                              | 8 ms   |
| Operating medium                               | Compressed air to ISO 8573-1:2010 [7:4:4]  |
| Note on operating and pilot medium             | Lubricated operation possible (in which case lubricated operation will always be required) |
| LABS (PWIS) conformity                         | VDMA24364-B1/B2-L  |
| Media temperature                              | -10 °C ... 60 °C   |
| Pilot medium                                   | Compressed air to ISO 8573-1:2010 [7:4:4]  |
| Nominal torque                                 | 10 Nm  |
| Tolerance for nominal tightening torque        | ± 20%  |
| Permissible actuation moment, regulating screw | 1 Nm   |
| Product weight                                 | 73.9 g   |
| Material covering                              | ES-BE  |
| Note on materials                              | RoHS-compliant   |
| Material cover                                 | PBT  |
| Material seals                                 | NBR  |
| Material hollow bolt                           | Wrought aluminium alloy  |
| Material sleeve                                | Wrought aluminium alloy  |
| Material release ring                          | POM  |
| Material adjusting screw                       | Brass  |