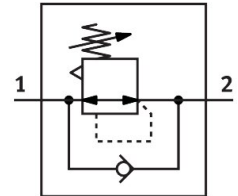


# Pressure regulator LRS-1/2-D-O-DI-MAXI

Part number: 194671

FESTO



 General operating condition

## Data sheet

Feature	Value
Size	Maxi
Series	D
Actuator lock	Rotary knob with detent
Mounting position	optional
Design	Directly actuated diaphragm regulator
Controller function	Output pressure constant Via primary pressure compensation With secondary venting With return flow function
Symbol	00991559
Pressure gauge (ANALOG) or Pressure display (DIGITAL)	Prepared for G1/4
Operating pressure	0.1 MPa ... 1.6 MPa
Operating pressure	1 bar ... 16 bar
Pressure regulation range	0.5 bar ... 12 bar
Max. pressure hysteresis	0.04 MPa
Max. pressure hysteresis	0.4 bar
Max. pressure hysteresis	5.8 psi
Standard nominal flow rate (standardised to DIN 1343)	5400 l/min
Operating medium	Compressed air to ISO 8573-1:2010 [7:4:4] Inert gas
Note on operating and pilot medium	Lubricated operation possible (in which case lubricated operation will always be required)
Corrosion resistance class CRC	2 - Moderate corrosion stress
LABS (PWIS) conformity	VDMA24364-B1/B2-L
Air purity class at output	Compressed air to ISO 8573-1:2010 [7:4:4] Inert gases
Media temperature	-10 °C ... 60 °C
Ambient temperature	-10 °C ... 60 °C
Product weight	1610 g
Type of mounting	With accessories
Pneumatic connection, port 1	G1/2
Pneumatic connection, port 2	G1/2
Note on materials	RoHS-compliant
Material sub-base	Die-cast zinc
Material seals	NBR

Feature	Value
Material housing	Die-cast zinc
Material membrane	NBR