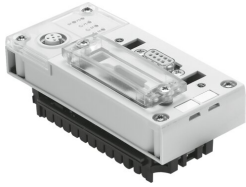


Bus node CPX-FB13

Part number: 195740



 General operating condition

Data sheet

Feature	Value
Protocol	Profibus DP
Dimensions (W x L x H)	50 x 107 x 50 mm
Product weight	115 g
Ambient temperature	-5 °C ... 50 °C
Storage temperature	-20 °C ... 70 °C
Degree of protection	IP65 IP67
Corrosion resistance class CRC	1 - Low corrosion stress
LABS (PWIS) conformity	VDMA24364-B2-L
Material housing	PC
LED display, product-specific	M: Modify, parameterisation PL: Load supply PS: Electronics supply, sensor supply SF: System fault
LED display, bus-specific	BF: Bus fault
Device-specific diagnostics	Channel-oriented and module-oriented diagnostics Undervoltage of modules Diagnostic memory
Operator controls	DIL switch
Field bus interface	2x M12x1, 5-pin, B-coded Sub-D socket, 9-pin Sub-D plug connector, for self-assembly
Max. address volume, inputs	64 Byte
Max. address volume, outputs	64 Byte
Parameterisation	Diagnostic behaviour Fail-safe response Forcing of channels Signal setup System parameter
Baud rate	96 ... 12000 kbit/s
Configuration support	GSD file
Additional functions	Channel-oriented diagnostics via fieldbus Start-up parameterisation in plain text via fieldbus System status can be mapped using process data Additional diagnostic interface for operator units
Operational voltage range DC	18 V ... 30 V
Nominal operating voltage DC	24 V
Intern power consumption nominal operating voltage	Typ. 200 mA
Types of communication	DPV0: Cyclic communication DPV1: Acyclic communication