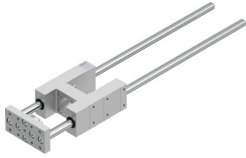


Guide unit EAGF-V2-KF-40-400

Part number: 2783080

FESTO



 General operating condition

Data sheet

Feature	Value
Size	40
Stroke	400 mm
Reversing backlash theoretical	0 µm
Mounting position	optional
Guide	Recirculating ball bearing guide
Design	Guidance
Corrosion resistance class CRC	0 - No corrosion stress
LABS (PWIS) conformity	VDMA24364-B2-L
Ambient temperature	-20 °C ... 80 °C
Max. force Fy	1000 N
Max. force Fy static	1260 N
Max. force Fz	1000 N
Max. force Fz static	1260 N
Max. moment Mx	44 Nm
Max. torque Mx static	55 Nm
Max. moment My	52 Nm
Max. torque My static	65 Nm
Max. moment Mz	52 Nm
Max. torque Mz static	65 Nm
Displacement force	15 N
Moving mass	2563 g
Product weight	3797 g
Centre of gravity at 0 mm stroke	38 mm
Centre of gravity additional of moving mass per 10 mm	4.2 mm
Type of mounting	Via female thread
Note on materials	RoHS-compliant
Material guide component	Tempered steel
Material housing	Anodised
Material yoke plate	Steel