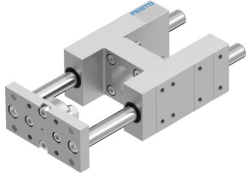


Guide unit EAGF-V2-KF-50-100

Part number: 2783639

FESTO



 General operating condition

Data sheet

| Feature | Value |
|---|----------------------------------|
| Size | 50 |
| Stroke | 100 mm |
| Reversing backlash theoretical | 0 µm |
| Mounting position | optional |
| Guide | Recirculating ball bearing guide |
| Design | Guidance |
| Corrosion resistance class CRC | 0 - No corrosion stress |
| LABS (PWIS) conformity | VDMA24364-B2-L |
| Ambient temperature | -20 °C ... 80 °C |
| Max. force Fy | 1260 N |
| Max. force Fy static | 1600 N |
| Max. force Fz | 1260 N |
| Max. force Fz static | 1600 N |
| Max. moment Mx | 65 Nm |
| Max. torque Mx static | 83 Nm |
| Max. moment My | 70 Nm |
| Max. torque My static | 89 Nm |
| Max. moment Mz | 70 Nm |
| Max. torque Mz static | 89 Nm |
| Displacement force | 15 N |
| Moving mass | 2505 g |
| Product weight | 4549 g |
| Centre of gravity at 0 mm stroke | 46 mm |
| Centre of gravity additional of moving mass per 10 mm | 4.3 mm |
| Type of mounting | Via female thread |
| Note on materials | RoHS-compliant |
| Material guide component | Tempered steel |
| Material housing | Anodised |
| Material yoke plate | Steel |