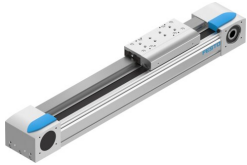


# Toothed belt axis EGC-120-400-TB-KF-0H-GK

Part number: 3013364

FESTO



 General operating condition

## Data sheet

Feature	Value
Effective diameter of drive pinion	39.79 mm
Working stroke	400 mm
Size	120
Stroke reserve	0 mm
Toothed-belt pitch	5 mm
Mounting position	optional
Guide	Recirculating ball bearing guide
Design	Electromechanical linear axis With toothed belt
Type of motor	Stepper motor Servo motor
Symbol	00991212
Max. acceleration	50 m/s <sup>2</sup>
Max. speed	5 m/s
Repetition accuracy	±0.08 mm
Duty cycle	100%
LABS (PWIS) conformity	VDMA24364 zone III
Degree of protection	IP40
Ambient temperature	-10 °C ... 60 °C
2nd moment of area Iy	4620000 mm <sup>4</sup>
2nd moment of area Iz	5650000 mm <sup>4</sup>
Max. force Fy	6890 N
Max. force Fz	6890 N
Max. force Fy total axis	6890 N
Max. force Fz total axis	6890 N
Fy at theoretical life value of 100 km (only guide consideration)	25383 N
Fz at theoretical life value of 100 km (only guide consideration)	25383 N
Max. idle running transfer resistance	70 N
Max. moment Mx	144 Nm
Max. moment My	380 Nm
Max. moment Mz	380 Nm
Max. moment Mx total axis	144 Nm
Max. moment My total axis	380 Nm
Max. moment Mz total axis	380 Nm
Mx at theoretical life value of 100 km (only guide consideration)	531 Nm
My at theoretical life value of 100 km (only guide consideration)	1400 Nm

<b>Feature</b>	<b>Value</b>
Mz at theoretical life value of 100 km (only guide consideration)	1400 Nm
Max. feed force Fx	800 N
Torsional mass moment of inertia It	2680000 mm <sup>4</sup>
Mass moment of inertia JH per metre of stroke	0.93 kgcm <sup>2</sup>
Mass moment of inertia JL per kg of working load	3.96 kgcm <sup>2</sup>
Feed constant	125 mm/U
Reference service life	5000 km
Material end cap	Wrought aluminium alloy Anodised
Material profile	Wrought aluminium alloy Anodised
Note on materials	RoHS-compliant
Material drive cover	Wrought aluminium alloy Anodised
Material guide slide	Steel
Material guide rail	Steel
Material pulleys	High-alloy stainless steel
Material slide	Wrought aluminium alloy Anodised
Material toothed belt clamping piece	Stainless steel casting
Material toothed belt	Polychloroprene or nitrile rubber (NBR) with glass cord and nylon coating