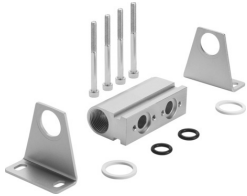


Common supply manifold PAL-3/8-2-B

Part number: 30692

FESTO



 [General operating condition](#)

Data sheet

Feature	Value
Mounting position	optional
Max. number of valve positions	2
LABS (PWIS) conformity	VDMA24364-B1/B2-L
Product weight	510 g
Type of mounting	Via mounting bracket
Pneumatic connection, port 1	G3/4
Note on materials	RoHS-compliant
Material sub-base	Aluminium Anodised