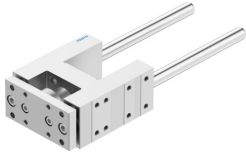


Guide unit FENG-50-160-KF

Part number: 34508

FESTO



 [General operating condition](#)

Data sheet

Feature	Value
Size	50
Stroke	160 mm
Mounting position	optional
Guide	Recirculating ball bearing guide
Design	Guidance
Explosion protection	The information in the certificate must be observed!
LABS (PWIS) conformity	VDMA24364-B2-L
Ambient temperature	-20 °C ... 80 °C
Max. force Fy	1260 N
Max. force Fy static	1600 N
Max. force Fz	1260 N
Max. force Fz static	1600 N
Max. moment Mx	65 Nm
Max. torque Mx static	83 Nm
Max. moment My	70 Nm
Max. torque My static	89 Nm
Max. moment Mz	70 Nm
Max. torque Mz static	89 Nm
Displacement force	15 N
Product weight	4814 g
Type of mounting	Via female thread
Note on materials	RoHS-compliant
Material guide component	Tempered steel
Material housing	Anodised wrought aluminium alloy
Material yoke plate	Anodised wrought aluminium alloy