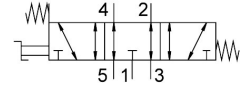



Selector valve VHEF-ES-P53E-M-G14

Part number: 4106813

FESTO



 General operating condition

Data sheet

Feature	Value
Valve function	5/3 exhausted
Type of actuation	Manual
Construction width	20 mm
Standard nominal flow rate (standardised to DIN 1343)	900 l/min
pneumatic working port	G1/4
Operating pressure	-0.095 MPa ... 1 MPa
Operating pressure	-0.95 bar ... 10 bar
Design	Piston gate valve
Type of reset	Mechanical spring
Nominal size	7 mm
Exhaust-air function	With flow control option
Instructions on use	Actuate manually only
Sealing principle	Soft
Mounting position	optional
Type of piloting	Direct
Flow direction	Reversible
Symbol	00995891
lap	Overlap
Max. switching frequency	0.5 Hz
Explosion protection	Zone 1 (ATEX) Zone 2 (ATEX) Zone 21 (ATEX) Zone 22 (ATEX)
Operating medium	Compressed air to ISO 8573-1:2010 [7:-:-]
Note on operating and pilot medium	Lubricated operation possible (in which case lubricated operation will always be required)
Corrosion resistance class CRC	1 - Low corrosion stress
LABS (PWIS) conformity	VDMA24364-B1/B2-L
Media temperature	-10 °C ... 60 °C
Ambient temperature	-10 °C ... 60 °C
Actuating torque	0.7 Nm
Max. force on actuation	200 N
Max. lateral force on actuation	200 N
Product weight	268 g
Type of mounting	With through-hole
Pneumatic connection, port 1	G1/4
Pneumatic connection, port 2	G1/4

Feature	Value
Pneumatic connection, port 3	G1/4
Pneumatic connection, port 4	G1/4
Pneumatic connection, port 5	G1/4
Note on materials	RoHS-compliant
Material cover	PA-reinforced
Material seals	NBR
Material housing	Anodised wrought aluminium alloy
Material lever	PA-reinforced