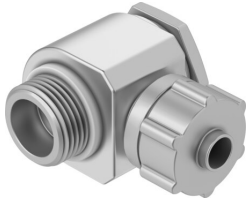


# Elbow quick connector LCK-3/8-PK-6

Part number: 4473

FESTO



 General operating condition

## Data sheet

Feature	Value
Nominal size	4.9 mm
Type of seal on screwed plug	Sealing ring
Mounting position	optional
Design	L-shape
Size of pack	1
Operating pressure complete temperature range	-0.095 MPa ... 1 MPa
Operating pressure complete temperature range	-0.95 bar ... 10 bar
Operating pressure complete temperature range	-13.775 psi ... 145 psi
Operating medium	Compressed air to ISO 8573-1:2010 [7:-:-]
Note on operating and pilot medium	Lubricated operation possible
Corrosion resistance class CRC	1 - Low corrosion stress
LABS (PWIS) conformity	VDMA24364-B1/B2-L
Ambient temperature	-10 °C ... 60 °C
Nominal torque	12.5 Nm
Tolerance for nominal tightening torque	± 20%
Pneumatic connection, port 1	Male thread G3/8
Pneumatic connection, port 2	For tubing outside diameter of 8 mm For barbed fitting inside diameter of 6 mm with nut
Material union nut	Wrought aluminium alloy, anodised
Note on materials	RoHS-compliant
Material sealing ring	Reinforced PA TPE-U(PU)
Material hollow bolt	Wrought aluminium alloy, anodised
Material swivel fitting	Die-cast zinc