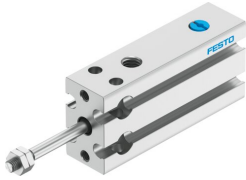


Compact cylinder DPDM-6-15-P-PA

Part number: 4830948

FESTO



 General operating condition

Data sheet

Feature	Value
Stroke	15 mm
Piston diameter	6 mm
Cushioning	Elastic cushioning rings/plates at both ends
Mounting position	optional
Mode of operation	Single-acting Pulling
Design	Piston Piston rod Profile barrel
Position detection	Via proximity switch
Symbol	00991850
Variants	Piston rod at one end
Operating pressure	0.25 MPa ... 0.8 MPa
Operating pressure	2.5 bar ... 8 bar
Operating medium	Compressed air to ISO 8573-1:2010 [7:4:4]
Note on operating and pilot medium	Lubricated operation possible (in which case lubricated operation will always be required)
Corrosion resistance class CRC	1 - Low corrosion stress
LABS (PWIS) conformity	VDMA24364-B2-L
Cleanroom suitability, measured according to ISO 14644-14	Class 6 according to ISO 14644-1
Ambient temperature	-10 °C ... 80 °C
Theoretical force at 0.6 MPa (6 bar, 87 psi), return stroke	9 N
Theoretical force at 0.6 MPa (6 bar, 87 psi), advance stroke	9 N
Moving mass for 0 mm stroke	3 g
Additional moving mass per 10 mm stroke	0.6 g
Basic weight for 0 mm stroke	21 g
Additional weight per 10 mm stroke	6.3 g
Type of mounting	With through-hole Via female thread
Pneumatic connection	M5
Note on materials	RoHS-compliant
Material cover	Wrought aluminium alloy
Material seals	TPE-U(PU)
Material housing	Anodised wrought aluminium alloy
Material piston rod	High-alloy stainless steel