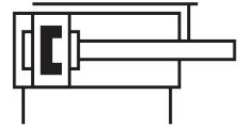
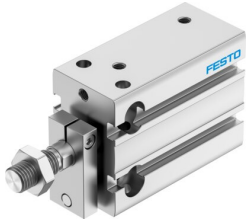



# Compact cylinder DPDM-Q-25-20-PA

Part number: 4840827

FESTO



 [General operating condition](#)

## Data sheet

| Feature  | Value  |
|--|--|
| Stroke   | 20 mm  |
| Piston diameter  | 25 mm  |
| Cushioning   | Elastic cushioning rings/plates at both ends   |
| Mounting position  | optional   |
| Mode of operation  | Double-acting  |
| Design   | Piston<br>Piston rod<br>Profile barrel   |
| Position detection   | Via proximity switch   |
| Symbol   | 00991737   |
| Variants   | Piston rod at one end  |
| Protection against torque/guide                              | Guide rod with yoke  |
| Operating pressure   | 0.1 MPa ... 0.8 MPa  |
| Operating pressure   | 1 bar ... 8 bar  |
| Operating medium   | Compressed air to ISO 8573-1:2010 [7:4:4]  |
| Note on operating and pilot medium                           | Lubricated operation possible (in which case lubricated operation will always be required) |
| Corrosion resistance class CRC                               | 2 - Moderate corrosion stress  |
| LABS (PWIS) conformity                                       | VDMA24364-B2-L   |
| Cleanroom suitability, measured according to ISO 14644-14    | Class 6 according to ISO 14644-1   |
| Ambient temperature  | -10 °C ... 80 °C   |
| Theoretical force at 0.6 MPa (6 bar, 87 psi)                 | 295 N  |
| Theoretical force at 0.6 MPa (6 bar, 87 psi), return stroke  | 247 N  |
| Theoretical force at 0.6 MPa (6 bar, 87 psi), advance stroke | 295 N  |
| Moving mass for 0 mm stroke                                  | 76 g   |
| Additional moving mass per 10 mm stroke                      | 8 g  |
| Basic weight for 0 mm stroke                                 | 223 g  |
| Additional weight per 10 mm stroke                           | 35 g   |
| Type of mounting   | With through-hole<br>Via female thread   |
| Pneumatic connection   | M5   |
| Note on materials  | RoHS-compliant   |
| Material cover   | Wrought aluminium alloy  |
| Material seals   | TPE-U(PU)  |
| Material housing   | Anodised wrought aluminium alloy   |
| Material piston rod  | High-alloy stainless steel   |