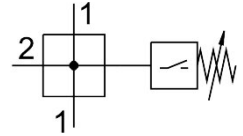


Branching module MS4-FRM-1/4-Y

Part number: 529556

FESTO



 [General operating condition](#)

Data sheet

Feature	Value
Mounting position	optional
Design	Branching module
Symbol	00995602
Operating pressure	0 bar ... 12 bar
Standard nominal flow rate in main flow direction 1->2	4600 l/min
Standard nominal flow rate, outlet upwards	1500 l/min
Standard nominal flow rate, outlet downwards	1500 l/min
Operational voltage range AC	0 V ... 250 V
Operational voltage range DC	0 V ... 125 V
Operating medium	Compressed air to ISO 8573-1:2010 [7:4:4] Inert gas
Note on operating and pilot medium	Lubricated operation possible (in which case lubricated operation will always be required)
Corrosion resistance class CRC	2 - Moderate corrosion stress
LABS (PWIS) conformity	VDMA24364-B1/B2-L
Storage temperature	-10 °C ... 60 °C
Suitable for use with food	See supplementary material information
Media temperature	-10 °C ... 60 °C
Ambient temperature	-10 °C ... 60 °C
Product weight	405 g
Pneumatic connection, port 1	G1/4
Pneumatic connection, port 2	G1/4
Pneumatic connection, port 3	G1/4
Pneumatic connection, port 4	G1/4
Note on materials	RoHS-compliant
Material housing	Die-cast aluminium