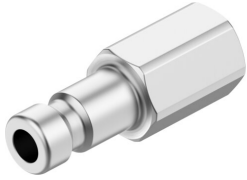


Quick coupling plug KS2-M5-I

Part number: 531660

FESTO



 [General operating condition](#)

Data sheet

Feature	Value
Nominal size	2.7 mm
Operating pressure complete temperature range	-0.095 MPa ... 1.2 MPa
Operating pressure complete temperature range	-0.95 bar ... 12 bar
Operating pressure complete temperature range	-13.775 psi ... 174 psi
Standard nominal flow rate (standardised to DIN 1343)	88 l/min ... 139 l/min
Nominal flow rate standardised according to ISO 8778	95.4 l/min ... 150.7 l/min
Operating medium	Compressed air to ISO 8573-1:2010 [7::-:]
Note on operating and pilot medium	Lubricated operation possible
Corrosion resistance class CRC	1 - Low corrosion stress
LABS (PWIS) conformity	VDMA24364-B1/B2-L
Ambient temperature	-10 °C ... 60 °C
Nominal torque	0.85 Nm
Tolerance for nominal tightening torque	± 15%
Product weight	5 g
Pneumatic connection, port 1	Female thread M5
Note on materials	RoHS-compliant
Information on materials	Brass, nickel plated