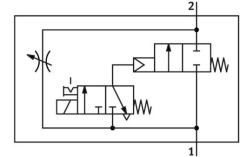


# Soft start valve MS4N-DE-1/8-V110

Part number: 532004

FESTO



 General operating condition

## Data sheet

Feature	Value
Type of actuation	Electric
Mounting position	optional
Manual override	Detenting Non-detenting
Design	Piston seat
Type of reset	Mechanical spring
Type of piloting	Pilot actuated
Pilot air supply	Internal
Flow direction	Non-reversible
Symbol	00991501
Valve function	2/2
Switching position indicator	With accessories
Operating pressure	4 bar ... 14 bar
b value	0.5
C value	4.6 l/sbar
Standard nominal flow rate (standardised to DIN 1343)	1000 l/min
Duty cycle	100%
Characteristic coil data	110 V AC: 50/60 Hz, pick-up power 3.0 VA, holding power 2.4 VA
Approval	c UL us - Recognized (OL)
Operating medium	Compressed air to ISO 8573-1:2010 [7:4:4] Inert gas
Note on operating and pilot medium	Lubricated operation possible (in which case lubricated operation will always be required)
Corrosion resistance class CRC	2 - Moderate corrosion stress
LABS (PWIS) conformity	VDMA24364-B1/B2-L
Suitable for use with food	See supplementary material information
Media temperature	-10 °C ... 60 °C
Degree of protection	IP65
Ambient temperature	-10 °C ... 60 °C
Product weight	263 g
Electrical connection	Type C Plugs To DIN EN 175301-803 Square design
Signal status display	With accessories
Type of mounting	With accessories

<b>Feature</b>	<b>Value</b>
Pneumatic connection, port 1	1/8 NPT
Pneumatic connection, port 2	1/8 NPT
Note on materials	RoHS-compliant
Material seals	NBR
Material housing	Die-cast aluminium