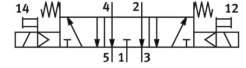


# Solenoid valve MDH-5/3E-D-3-M12-C

Part number: 533017

FESTO



 [General operating condition](#)

## Data sheet

| Feature   | Value  |
|---|--|
| Valve function  | 5/3 exhausted  |
| Type of actuation                                     | Electric   |
| Construction width                                    | 65 mm  |
| Standard nominal flow rate (standardised to DIN 1343) | 4600 l/min   |
| pneumatic working port                                | Sub-base size 3 to ISO 5599-1<br>G1/2  |
| Operating voltage                                     | 24V DC   |
| Operating pressure                                    | 3 bar ... 10 bar   |
| Design  | Piston gate valve  |
| Type of reset   | Mechanical spring  |
| Degree of protection                                  | IP65   |
| Nominal size  | 14.5 mm  |
| Grid dimension  | 71 mm  |
| Exhaust-air function                                  | With flow control option   |
| Sealing principle                                     | Soft   |
| Mounting position                                     | optional   |
| Conforms to standard                                  | ISO 5599-1   |
| Manual override                                       | Non-detenting  |
| ISO code  | 357  |
| Type of piloting                                      | Pilot actuated   |
| Pilot air supply                                      | Internal   |
| Flow direction  | Non-reversible   |
| Symbol  | 00991082   |
| lap   | Overlap  |
| Switching time off                                    | 84 ms  |
| Switching time on                                     | 36 ms  |
| Duty cycle  | 100%   |
| Max. positive test pulse with 0 signal                | 3800 µs  |
| Max. negative test pulse with 1 signal                | 4900 µs  |
| Characteristic coil data                              | 24 V DC: 2.7 W   |
| Permissible voltage fluctuations                      | +/- 10 %   |
| Operating medium                                      | Compressed air to ISO 8573-1:2010 [7:4:4]  |
| Note on operating and pilot medium                    | Lubricated operation possible (in which case lubricated operation will always be required) |
| Vibration resistance                                  | Transport application test with severity level 1 to FN 942017-4 and EN 60068-2-6           |

| <b>Feature</b>               | <b>Value</b>  |
|------------------------------|---|
| Shock resistance             | Shock test with severity level 2 to FN 942017-5 and EN 60068-2-27 |
| LABS (PWIS) conformity       | VDMA24364-B1/B2-L   |
| Media temperature            | -10 °C ... 50 °C  |
| Sound pressure level         | 85 dB(A)  |
| Ambient temperature          | -10 °C ... 50 °C  |
| Product weight               | 1120 g  |
| Electrical connection        | M12x1   |
| Type of mounting             | On sub-base<br>Via through-hole and screw                         |
| Pilot exhaust port 82        | M5  |
| Pilot exhaust port 84        | M5  |
| Pneumatic connection, port 1 | Sub-base size 3 to ISO 5599-1                                     |
| Pneumatic connection, port 2 | Sub-base size 3 to ISO 5599-1                                     |
| Pneumatic connection, port 3 | Sub-base size 3 to ISO 5599-1                                     |
| Pneumatic connection, port 4 | Sub-base size 3 to ISO 5599-1                                     |
| Pneumatic connection, port 5 | Sub-base size 3 to ISO 5599-1                                     |
| Note on materials            | RoHS-compliant  |
| Material seals               | HNBR<br>NBR   |
| Material housing             | Die-cast aluminium  |