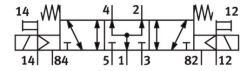
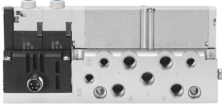


Solenoid valve VMPA1-M1H-B-S-M7-PI

Part number: 533387

FESTO



 [General operating condition](#)

Data sheet

| Feature | Value |
|---|---|
| Valve function | 5/3-way, pressurised |
| Type of actuation | Electrical |
| Valve size | 10 mm |
| Standard nominal flow rate (standardised to DIN 1343) | 300 l/min |
| pneumatic working port | M7 |
| Operating voltage | 24 V DC |
| Operating pressure | -0.09 MPa ... 1 MPa |
| Operating pressure | -0.9 bar ... 10 bar |
| Design | Piston gate valve |
| Type of reset | Mechanical spring |
| Approval | c UL us - Recognised (Oil) |
| CE mark (see declaration of conformity) | To EU EMC Directive In accordance with EU RoHS Directive |
| UKCA marking (see declaration of conformity) | To UK RoHS instructions |
| Degree of protection | IP65 In mounted state To IEC 60529 |
| Exhaust-air function | Can be throttled |
| Sealing principle | Soft |
| Mounting position | Any |
| Manual override | Detenting Non-detenting |
| Type of piloting | Piloted |
| Pilot air supply | External |
| Flow direction | Reversible |
| Symbol | 00991031 |
| lap | Overlap |
| Signal status display | Yes |
| Pilot pressure | 0.3 MPa ... 0.8 MPa |
| Pilot pressure | 3 bar ... 8 bar |
| Suitability for vacuum | Yes |
| Standard nominal flow rate with QS-6 | 300 l/min |
| Switching time off | 35 ms |
| Switching time on | 10 ms |
| Switching time reversal | 15 ms |
| Max. positive test pulse with 0 signal | 400 µs |
| Max. negative test pulse with 1 signal | 200 µs |

| Feature | Value |
|---|--|
| Permissible voltage fluctuations | +/-25% |
| Operating medium | Compressed air to ISO 8573-1:2010 [7:4:4] |
| Note on operating and pilot medium | Lubricated operation possible (in which case lubricated operation will always be required) |
| Vibration resistance | Transport application test with severity level 2 to FN 942017-4 and EN 60068-2-6 |
| Shock resistance | Shock test with severity level 2 to FN 942017-5 and EN 60068-2-27 |
| Corrosion resistance class CRC | 1 - Low corrosion stress |
| LABS (PWIS) conformity | VDMA24364-B1/B2-L |
| Storage temperature | -20 °C ... 40 °C |
| Media temperature | -5 °C ... 50 °C |
| Relative air humidity | Max. 90% at 40 °C |
| Ambient temperature | -5 °C ... 50 °C |
| Max. tightening torque for valve mounting | 0.25 Nm |
| Product weight | 143 g |
| Electrical connection | M8x1 Plug To EN 60947-5-2 |
| Type of mounting | With through-hole |
| Pilot air port 12/14 | M5 |
| Pilot exhaust port 82/84 | M5 |
| Pneumatic connection, port 1 | M7 |
| Pneumatic connection, port 2 | M7 |
| Pneumatic connection, port 3 | M7 |
| Pneumatic connection, port 4 | M7 |
| Pneumatic connection, port 5 | M7 |
| Note on materials | RoHS compliant |
| Material seals | NBR |
| Material housing | Die-cast aluminium |