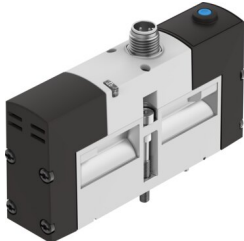


Solenoid valve

VSVA-B-M52-MZH-A1-1R5L

FESTO

Part number: 534546



General operating condition

Data sheet

Feature	Value
Valve function	5/2-way, monostable
Type of actuation	Electric
Construction width	26 mm
Standard nominal flow rate (standardised to DIN 1343)	1100 l/min
pneumatic working port	Sub-base size 26 mm to ISO 15407-1
Operating voltage	24V DC
Operating pressure	-0.09 MPa ... 1.6 MPa
Operating pressure	-0.9 bar ... 16 bar
Design	Piston gate valve
Type of reset	Mechanical spring
Approval	RCM trademark c UL us - Recognized (OL)
CE mark (see declaration of conformity)	To EU EMC Directive
UKCA marking (see declaration of conformity)	To UK RoHS instructions
Degree of protection	IP65 NEMA 4
Nominal size	9 mm
Grid dimension	27 mm
Exhaust-air function	With flow control option Via throttle plate Via individual sub-base
Sealing principle	Soft
Mounting position	optional
Conforms to standard	ISO 15407-1
Manual override	Non-detenting
Type of piloting	Pilot actuated
Pilot air supply	External
Flow direction	optional
Symbol	00991190
lap	Overlap
Reverse polarity protection	For all electrical connections
Additional functions	Safety shut-off
Signal status display	LED
Pilot pressure	0.3 MPa ... 0.8 MPa
Pilot pressure	3 bar ... 8 bar
b value	0.25
C value	4.5 l/sbar

Feature	Value
Flow rate of valve	1400 l/min
Flow rate of valve on individual sub-base	1100 l/min
Flow rate of pneumatically interlinked valve	1100 l/min
Switching time off	52 ms
Switching time on	20 ms
Duty cycle	100%
Max. positive test pulse with 0 signal	400 µs
Max. negative test pulse with 1 signal	100 µs
Nominal pick-up current per solenoid coil	110 mA up to 20 ms
Nominal current with current reduction	30 mA after 20 ms
Characteristic coil data	24 V DC: low-current phase 1.0 W, high-current phase 2.4 W
Permissible voltage fluctuations	+/- 10 %
Operating medium	Compressed air to ISO 8573-1:2010 [7:4:4]
Note on operating and pilot medium	Lubricated operation possible (in which case lubricated operation will always be required)
Vibration resistance	Transport application test with severity level 2 to FN 942017-4 and EN 60068-2-6
Shock resistance	Shock test with severity level 2 to FN 942017-5 and EN 60068-2-27
Corrosion resistance class CRC	2 - Moderate corrosion stress
LABS (PWIS) conformity	VDMA24364-B1/B2-L
Media temperature	-5 °C ... 50 °C
Relative air humidity	0 - 90%
Protection against direct and indirect contact	PELV
Pilot medium	Compressed air to ISO 8573-1:2010 [7:4:4]
Ambient temperature	-5 °C ... 50 °C
Max. tightening torque for valve mounting	1.8 Nm ... 2.2 Nm
Product weight	270 g
Electrical connection	3-pin M12x1 Central plug Round design
Type of mounting	On sub-base Via through-hole and screw
Pilot air port 12/14	Sub-base size 26 mm to ISO 15407-1
Pilot exhaust port 82/84	Ducted Not ducted as per standard Either:
Note on materials	RoHS-compliant
Material seals	FPM HNBR NBR
Material housing	Die-cast aluminium