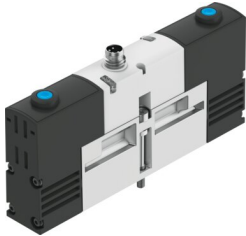


Solenoid valve VSVA-B-T32H-AH-A2-1R2L

Part number: 534773

FESTO



 General operating condition

Data sheet

Feature	Value
Valve function	2x3/2-way, open/closed, monostable
Type of actuation	Electric
Construction width	18 mm
Standard nominal flow rate (standardised to DIN 1343)	400 l/min
pneumatic working port	Sub-base size 18 mm to ISO 15407-1 Sub-base size 02 to VDMA 24563
Operating voltage	24V DC
Operating pressure	0.3 MPa ... 0.8 MPa
Operating pressure	3 bar ... 8 bar
Design	Piston gate valve
Type of reset	Pneumatic spring
Approval	C-Tick c UL us - Recognized (OL)
CE mark (see declaration of conformity)	To EU EMC Directive
UKCA marking (see declaration of conformity)	To UK RoHS instructions
Degree of protection	IP65
Nominal size	5 mm
Exhaust-air function	With flow control option
Sealing principle	Soft
Mounting position	optional
Conforms to standard	ISO 15407-1 VDMA 24563
Manual override	Non-detenting
Type of piloting	Pilot actuated
Pilot air supply	Internal
Flow direction	Non-reversible
Symbol	00991806
lap	Overlap
Reverse polarity protection	For all electrical connections
Additional functions	Safety shut-off
Signal status display	LED
Flow rate of valve	600 l/min
Flow rate of valve on individual sub-base	450 l/min
Flow rate of pneumatically interlinked valve	400 l/min
Switching time off	22 ms
Switching time on	10 ms

Feature	Value
Operational voltage range DC	21.6 V ... 26.4 V
Duty cycle	100%
Max. positive test pulse with 0 signal	500 µs
Max. negative test pulse with 1 signal	500 µs
Characteristic coil data	24 V DC: low-current phase 1.0 W, high-current phase 2.4 W
Operating medium	Compressed air to ISO 8573-1:2010 [7:4:4]
Note on operating and pilot medium	Lubricated operation possible (in which case lubricated operation will always be required)
Vibration resistance	Transport application test with severity level 2 to FN 942017-4 and EN 60068-2-6
Shock resistance	Shock test with severity level 2 to FN 942017-5 and EN 60068-2-27
Corrosion resistance class CRC	2 - Moderate corrosion stress
LABS (PWIS) conformity	VDMA24364-B1/B2-L
Media temperature	-5 °C ... 50 °C
Relative air humidity	0 - 90%
Protection against direct and indirect contact	PELV
Ambient temperature	-5 °C ... 50 °C
Max. tightening torque for valve mounting	0.9 Nm ... 1.1 Nm
Product weight	140 g
Electrical connection	4-pin M8x1 Central plug Round design
Type of mounting	On sub-base
Note on materials	RoHS-compliant