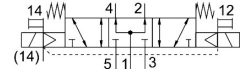
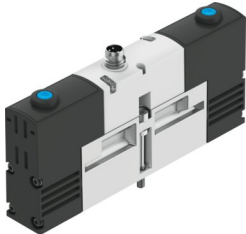



Solenoid valve VSVA-B-P53U-ZH-A2-1R2L

Part number: 534790

FESTO



 [General operating condition](#)

Data sheet

| Feature | Value |
|---|--|
| Valve function | 5/3-way, pressurised |
| Type of actuation | Electric |
| Construction width | 18 mm |
| Standard nominal flow rate (standardised to DIN 1343) | 450 l/min |
| pneumatic working port | Sub-base size 18 mm to ISO 15407-1 Sub-base size 02 to VDMA 24563 |
| Operating voltage | 24V DC |
| Operating pressure | -0.09 MPa ... 1 MPa |
| Operating pressure | -0.9 bar ... 10 bar |
| Design | Piston gate valve |
| Type of reset | Mechanical spring |
| Approval | C-Tick c UL us - Recognized (OL) |
| CE mark (see declaration of conformity) | To EU EMC Directive |
| UKCA marking (see declaration of conformity) | To UK RoHS instructions |
| Degree of protection | IP65 |
| Nominal size | 5 mm |
| Exhaust-air function | With flow control option |
| Sealing principle | Soft |
| Mounting position | optional |
| Conforms to standard | ISO 15407-1 VDMA 24563 |
| Manual override | Non-detenting |
| Type of piloting | Pilot actuated |
| Pilot air supply | External |
| Flow direction | Reversible |
| Symbol | 00992940 |
| lap | Overlap |
| Reverse polarity protection | For all electrical connections |
| Additional functions | Safety shut-off |
| Signal status display | LED |
| Pilot pressure | 0.3 MPa ... 0.8 MPa |
| Pilot pressure | 3 bar ... 8 bar |
| Flow rate of valve | 650 l/min |
| Flow rate of valve on individual sub-base | 500 l/min |
| Flow rate of pneumatically interlinked valve | 450 l/min |

| Feature | Value |
|--|--|
| Switching time off | 36 ms |
| Switching time on | 15 ms |
| Operational voltage range DC | 21.6 V ... 26.4 V |
| Duty cycle | 100% |
| Max. positive test pulse with 0 signal | 500 µs |
| Max. negative test pulse with 1 signal | 500 µs |
| Characteristic coil data | 24 V DC: low-current phase 1.0 W, high-current phase 2.4 W |
| Operating medium | Compressed air to ISO 8573-1:2010 [7:4:4] |
| Note on operating and pilot medium | Lubricated operation possible (in which case lubricated operation will always be required) |
| Vibration resistance | Transport application test with severity level 2 to FN 942017-4 and EN 60068-2-6 |
| Shock resistance | Shock test with severity level 2 to FN 942017-5 and EN 60068-2-27 |
| Corrosion resistance class CRC | 2 - Moderate corrosion stress |
| LABS (PWIS) conformity | VDMA24364-B1/B2-L |
| Media temperature | -5 °C ... 50 °C |
| Relative air humidity | 0 - 90% |
| Protection against direct and indirect contact | PELV |
| Ambient temperature | -5 °C ... 50 °C |
| Max. tightening torque for valve mounting | 0.9 Nm ... 1.1 Nm |
| Product weight | 140 g |
| Electrical connection | 4-pin M8x1 Central plug Round design |
| Type of mounting | On sub-base |
| Note on materials | RoHS-compliant |