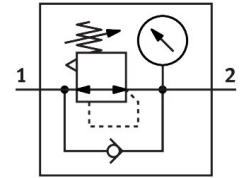


# Pressure regulator MS12-LR-G-D7-LD-AS

Part number: 537148

FESTO



 General operating condition

## Data sheet

Feature	Value
Size	12
Series	MS
Actuator lock	Rotary knob with detent can be closed with accessories
Mounting position	optional
Design	Piloted diaphragm regulator
Controller function	Output pressure constant Via primary pressure compensation With secondary venting With return flow function
Symbol	00991558
Pressure gauge (ANALOG) or Pressure display (DIGITAL)	With pressure gauge
Operating pressure	0.08 MPa ... 2.1 MPa
Operating pressure	0.8 bar ... 21 bar
Pressure regulation range	0.5 bar ... 12 bar
Max. pressure hysteresis	0.04 MPa
Max. pressure hysteresis	0.4 bar
Max. pressure hysteresis	5.8 psi
Flow rate of secondary exhaust	≤600 l/min
Standard nominal flow rate (standardised to DIN 1343)	13000 l/min ... 22000 l/min
Operating medium	Compressed air to ISO 8573-1:2010 [7:4:4] Inert gas
Corrosion resistance class CRC	2 - Moderate corrosion stress
LABS (PWIS) conformity	VDMA24364-B1/B2-L
Storage temperature	-10 °C ... 60 °C
Media temperature	-10 °C ... 60 °C
Ambient temperature	-10 °C ... 60 °C
Product weight	4000 g
Type of mounting	Via mounting bracket
Pneumatic connection, port 1	Sub-base
Pneumatic connection, port 2	Sub-base
Material covering	PA
Note on materials	RoHS-compliant
Material control panel	PA-reinforced POM
Material underneath cover	Wrought aluminium alloy

<b>Feature</b>	<b>Value</b>
Material seals	NBR
Material spring	Spring steel
Material housing	Die-cast aluminium
Material membrane	NBR
Material valve stem	Wrought aluminium alloy NBR High-alloy stainless steel