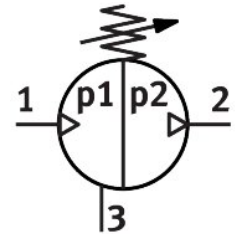
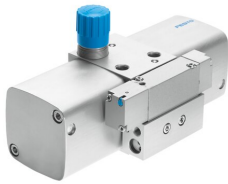


Pressure booster DPA-40-16

Part number: 537274

FESTO



 General operating condition

Data sheet

Feature	Value
Piston diameter	40 mm
Mounting position	optional
Design	Twin-piston pressure booster
Symbol	00991432
Pressure gauge (ANALOG) or Pressure display (DIGITAL)	Prepared for G1/8
Output pressure 2	0.45 MPa ... 1.6 MPa
Output pressure 2	4.5 bar ... 16 bar
Output pressure 2	65.25 psi ... 232 psi
Operating pressure	0.25 MPa ... 1 MPa
Operating pressure	2.5 bar ... 10 bar
Operating pressure	36.25 psi ... 145 psi
Pressure regulation range	0.45 MPa ... 1.6 MPa
Pressure regulation range	4.5 bar ... 16 bar
Pressure regulation range	65.25 psi ... 232 psi
Inlet pressure 1	2.5 bar ... 10 bar
Inlet pressure 1	0.25 MPa ... 1 MPa
Inlet pressure 1	36.25 psi ... 145 psi
Note on pressure regulation range	If the controller spring is tensioned to the maximum, the maximum output pressure can be exceeded by 40%.
Operating medium	Compressed air to ISO 8573-1:2010 [7:3:4]
Note on operating and pilot medium	Lubricated operation not possible
Corrosion resistance class CRC	2 - Moderate corrosion stress
LABS (PWIS) conformity	VDMA24364-B1/B2-L
Storage temperature	5 °C ... 60 °C
Ambient temperature	5 °C ... 60 °C
Product weight	1500 g
Type of mounting	Via female thread
Pneumatic connection, port 1	G1/4
Pneumatic connection, port 2	G1/4
Pneumatic connection, port 3	M7
Note on materials	RoHS-compliant