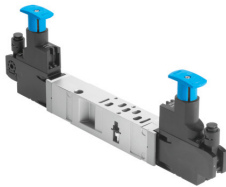


# Regulator plate VABF-S4-1-R5C2-C-6

Part number: 540168

FESTO



[PDF General operating condition](#)

## Data sheet

| Feature                                      | Value  |
|--|--|
| Construction width                           | 26 mm  |
| Based on standard                            | ISO 15407-2  |
| Mounting position                            | Any  |
| Controller function                          | Output pressure constant<br>With secondary exhausting                                      |
| Symbol                                       | 00991862   |
| Selection of pressure gauge                  | possible   |
| Operating pressure                           | 0.6 MPa  |
| Operating pressure                           | 6 bar  |
| Pressure regulation range                    | 0.05 MPa ... 0.6 MPa   |
| Pressure regulation range                    | 0.5 bar ... 6 bar  |
| Pressure regulation range                    | 7.25 psi ... 87 psi  |
| Inlet pressure 1                             | 0.5 bar ... 10 bar   |
| CE mark (see declaration of conformity)      | To EU Low Voltage Directive  |
| UKCA marking (see declaration of conformity) | To UK regulations for electrical equipment   |
| Operating medium                             | Compressed air to ISO 8573-1:2010 [7:4:4]  |
| Note on operating and pilot medium           | Lubricated operation possible (in which case lubricated operation will always be required) |
| Corrosion resistance class CRC               | 0 - No corrosion stress  |
| LABS (PWIS) conformity                       | VDMA24364-B1/B2-L  |
| Degree of protection                         | IP65<br>NEMA 4   |
| Pilot medium                                 | Compressed air to ISO 8573-1:2010 [7:4:4]  |
| Ambient temperature                          | -5 °C ... 50 °C  |
| Product weight                               | 692 g  |
| Mounting with vertical stacking              | On manifold sub-base<br>On individual sub-base   |
| Pressure gauge connection                    | With retaining clamp   |
| Material control panel                       | Process automation   |
| Material regulator housing                   | Die-cast aluminium   |