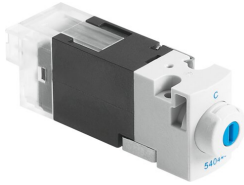


Solenoid valve MHA1-M1LH-3/20-0,6-HC

Part number: 540440

FESTO



[PDF](#) General operating condition

Data sheet

| Feature | Value |
|-------------------------------------------------------|-------------------------------------------|
| Valve function | 3/2 open, monostable |
| Type of actuation | Electric |
| Construction width | 10 mm |
| Standard nominal flow rate (standardised to DIN 1343) | 10 l/min |
| pneumatic working port | Sub-base |
| Operating voltage | 24V DC |
| Operating pressure | 0 MPa ... 0.6 MPa |
| Operating pressure | 0 bar ... 6 bar |
| Operating pressure | 0 psi ... 87 psi |
| Design | Poppet valve with spring return |
| Type of reset | Mechanical spring |
| Degree of protection | IP40 |
| Approval | c UL us - Recognized (OL) |
| Certificate issuing authority | UL MH19482 |
| Nominal size | 0.7 mm |
| Grid dimension | 10 mm |
| Exhaust-air function | With flow control option |
| Sealing principle | Soft |
| Mounting position | optional |
| Manual override | Detenting Non-detenting |
| Type of piloting | Direct |
| Flow direction | Non-reversible |
| Symbol | 00991322 |
| Valve position code | Label |
| lap | Underlap |
| Note on forced dynamization | Switching frequency min. 1/week |
| Signal status display | LED |
| Max. switching frequency | 20 Hz |
| Switching time off | 4 ms |
| Switching time on | 4 ms |
| Duty cycle | 100% |
| Electrical power consumption | 1.1 W |
| Characteristic coil data | 24 V DC: 1.1 W |
| Permissible voltage fluctuations | +/- 10 % |
| Operating medium | Compressed air to ISO 8573-1:2010 [7:4:4] |

| Feature | Value |
|------------------------------------|--------------------------------------------------------------------------------------------|
| Note on operating and pilot medium | Lubricated operation possible (in which case lubricated operation will always be required) |
| Vibration resistance | Transport application test with severity level 2 to FN 942017-4 and EN 60068-2-6 |
| Shock resistance | Shock test with severity level 2 to FN 942017-5 and EN 60068-2-27 |
| Corrosion resistance class CRC | 2 - Moderate corrosion stress |
| LABS (PWIS) conformity | VDMA24364-B2-L |
| Storage temperature | -20 °C ... 60 °C |
| Media temperature | -5 °C ... 40 °C |
| Ambient temperature | -5 °C ... 40 °C |
| Product weight | 11 g |
| Electrical connection | Plugs |
| Type of mounting | On sub-base With through-hole |
| Pneumatic connection, port 11 | Sub-base |
| Pneumatic connection, port 2 | Sub-base |
| Pneumatic port 33 | Sub-base |
| Note on materials | RoHS-compliant |
| Material seals | FPM HNBR NBR |
| Material housing | PPS reinforced |