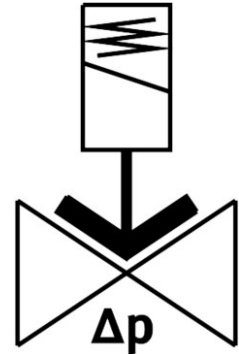
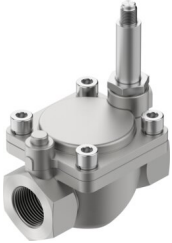


# Solenoid valve

## VZWM-L-M22C-G1-F5-R1

Part number: 546166

FESTO



 [General operating condition](#)

## Data sheet

| Feature                                  | Value   |
|--|---|
| Design                                   | Diaphragm valve<br>servo-controlled   |
| Type of actuation                        | Electric  |
| Sealing principle                        | Soft  |
| Mounting position                        | Preferably vertical   |
| Type of mounting                         | In-line installation  |
| Connection Process valve                 | G1  |
| Electrical connection                    | Solenoid coil type MH-... , coil can be ordered as an accessory                     |
| Nominal size                             | 25 mm   |
| Valve function                           | 2/2-way, closed, monostable   |
| Flow direction                           | Non-reversible  |
| Medium                                   | Compressed air to ISO 8573-1:2010 [7:4:4]<br>Inert gases<br>Water<br>Neutral fluids |
| Medium pressure, valve for liquid media  | 0.05 MPa ... 0.6 MPa  |
| Medium pressure, valve for liquid media  | 0.5 bar ... 6 bar   |
| Medium pressure, valve for liquid media  | 7.25 psi ... 87 psi   |
| Medium pressure, valve for gaseous media | 0.05 MPa ... 1 MPa  |
| Medium pressure, valve for gaseous media | 0.5 bar ... 10 bar  |
| Medium pressure, valve for gaseous media | 7.25 psi ... 145 psi  |
| Burst pressure                           | 4 MPa   |
| Burst pressure                           | 40 bar  |
| Burst pressure                           | 580 psi   |
| Overload pressure                        | 3.5 MPa   |
| Overload pressure                        | 35 bar  |
| Overload pressure                        | 507.5 psi   |
| Pressure difference                      | 0.05 MPa  |
| Pressure difference                      | 0.5 bar   |
| Pressure difference                      | 7.25 psi  |

| Feature   | Value  |
|---|--|
| Type of piloting                                      | Pilot actuated                                     |
| Symbol  | 00995681   |
| Max. viscosity  | 22 mm <sup>2</sup> /s                              |
| Media temperature                                     | -10 °C ... 60 °C                                   |
| Media temperature for fluids                          | 5 °C ... 50 °C                                     |
| Ambient temperature                                   | -10 °C ... 60 °C                                   |
| Flow rate Kv  | 10.7 m <sup>3</sup> /h                             |
| Standard nominal flow rate (standardised to DIN 1343) | 11700 l/min  |
| Switching time on                                     | 15 ms  |
| Switch-on time for fluids                             | 300 ms   |
| Switching time off                                    | 12 ms  |
| Switch-off time for fluids                            | 950 ms   |
| b value   | 0.57   |
| C value   | 41 l/sbar  |
| Note on materials                                     | RoHS-compliant                                     |
| LABS (PWIS) conformity                                | VDMA24364 zone III                                 |
| Material housing                                      | Stainless steel casting                            |
| Material number housing                               | 1.4581   |
| Material seals  | NBR  |
| Material plunger tube                                 | High-alloy steel                                   |
| Product weight  | 1100 g   |
| CE mark (see declaration of conformity)               | In accordance with EU Pressure Equipment Directive |
| UKCA marking (see declaration of conformity)          | to UK Pressure Equipment Regulations               |
| Corrosion resistance class CRC                        | 3 - high corrosion stress                          |
| Max. tightening torque for cover screw                | 30 Nm  |
| Max. tightening torque for connecting thread          | 350 Nm   |
| Max. tightening torque for coil fastening             | 2 Nm   |