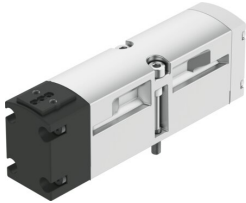


Basic valve VSVA-B-M52-A-A1-P1

Part number: 546739

FESTO



[PDF General operating condition](#)

Data sheet

| Feature | Value |
|---|--|
| Valve function | 5/2-way, monostable |
| Type of actuation | Electric |
| Valve size | 26 mm |
| Standard nominal flow rate (standardised to DIN 1343) | 1100 l/min |
| pneumatic working port | Sub-base size 26 mm to ISO 15407-1 Sub-base size 01 to VDMA 24563 G1/4 |
| Operating pressure | 0.2 MPa ... 1 MPa |
| Operating pressure | 2 bar ... 10 bar |
| Design | Piston gate valve |
| Type of reset | Pneumatic spring |
| Approval | c UL us - Recognized (OL) |
| Degree of protection | IP65 NEMA 4 |
| Nominal size | 9 mm |
| Exhaust-air function | With flow control option |
| Sealing principle | Soft |
| Mounting position | optional |
| Conforms to standard | ISO 15407-1 VDMA 24563 |
| Type of piloting | Pilot actuated |
| Pilot air supply | Internal |
| Flow direction | Non-reversible |
| Symbol | 00991049 |
| lap | Overlap |
| Signal status display | LED |
| Pilot pressure | 0.3 MPa ... 1 MPa |
| Pilot pressure | 3 bar ... 10 bar |
| Flow rate of valve | 1400 l/min |
| Flow rate of valve on individual sub-base | 1100 l/min |
| Flow rate of pneumatically interlinked valve | 1100 l/min |
| Operating medium | Compressed air to ISO 8573-1:2010 [7:4:4] |
| Note on operating and pilot medium | Lubricated operation possible (in which case lubricated operation will always be required) |
| Vibration resistance | Transport application test with severity level 2 to FN 942017-4 and EN 60068-2-6 |
| Shock resistance | Shock test with severity level 2 to FN 942017-5 and EN 60068-2-27 |

| Feature | Value |
|---|---|
| Corrosion resistance class CRC | 0 - No corrosion stress |
| LABS (PWIS) conformity | VDMA24364-B1/B2-L |
| Media temperature | -5 °C ... 50 °C |
| Relative air humidity | 0 - 90% |
| Sound pressure level | 85 dB(A) |
| Pilot medium | Compressed air to ISO 8573-1:2010 [7:4:4] |
| Ambient temperature | -5 °C ... 50 °C |
| Max. tightening torque for valve mounting | 1.8 Nm ... 2.2 Nm |
| Product weight | 142 g |
| Type of mounting | On sub-base |
| Auxiliary pilot air port 12 | Sub-base size 26 mm to ISO 15407-1 |
| Auxiliary pilot air port 14 | Sub-base size 26 mm to ISO 15407-1 |
| Pilot exhaust port 82/84 | Ducted Not ducted as per standard |
| Pneumatic connection, port 1 | Sub-base size 26 mm to ISO 15407-1 |
| Pneumatic connection, port 2 | Sub-base size 26 mm to ISO 15407-1 |
| Pneumatic connection, port 3 | Sub-base size 26 mm to ISO 15407-1 |
| Pneumatic connection, port 4 | Sub-base size 26 mm to ISO 15407-1 |
| Pneumatic connection, port 5 | Sub-base size 26 mm to ISO 15407-1 |
| Pilot control interface | To ISO 15218 |
| Note on materials | RoHS-compliant |
| Material seals | HNBR NBR |
| Material housing | Die-cast aluminium |
| Material screws | Steel Galvanised |