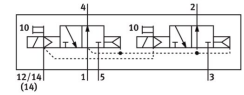


# Solenoid valve VSVA-B-T32U-AZH-A1-1AC1

Part number: 547110

FESTO



[PDF](#) General operating condition

## Data sheet

Feature	Value
Valve function	2x3/2-way, open, monostable
Type of actuation	Electric
Valve size	26 mm
Standard nominal flow rate (standardised to DIN 1343)	900 l/min
pneumatic working port	Sub-base size 26 mm to ISO 15407-1 Sub-base size 01 to VDMA 24563 G1/4
Operating voltage	24V AC
Operating pressure	0.2 MPa ... 1 MPa
Operating pressure	2 bar ... 10 bar
Design	Piston gate valve
Type of reset	Pneumatic spring
Degree of protection	IP65 NEMA 4
Nominal size	9 mm
Exhaust-air function	With flow control option
Sealing principle	Soft
Mounting position	optional
Conforms to standard	ISO 15407-1 VDMA 24563
Manual override	Non-detenting
Type of piloting	Pilot actuated
Pilot air supply	External
Flow direction	Non-reversible
Symbol	00991819
lap	Overlap
Signal status display	LED
Pilot pressure	0.3 MPa ... 1 MPa
Pilot pressure	3 bar ... 10 bar
Flow rate of valve	1250 l/min
Flow rate of valve on individual sub-base	1000 l/min
Flow rate of pneumatically interlinked valve	900 l/min
Switching time off	28 ms
Switching time on	20 ms
Duty cycle	100%
Characteristic coil data	24 V AC: 50/60 Hz, pick-up power 3.1 VA, holding power 2.3 VA
Permissible voltage fluctuations	-15%/+10%

Feature	Value
Operating medium	Compressed air to ISO 8573-1:2010 [7:4:4]
Note on operating and pilot medium	Lubricated operation possible (in which case lubricated operation will always be required)
Vibration resistance	Transport application test with severity level 2 to FN 942017-4 and EN 60068-2-6
Shock resistance	Shock test with severity level 2 to FN 942017-5 and EN 60068-2-27
Corrosion resistance class CRC	0 - No corrosion stress
LABS (PWIS) conformity	VDMA24364-B1/B2-L
Media temperature	-5 °C ... 50 °C
Relative air humidity	0 - 90%
Sound pressure level	85 dB(A)
Pilot medium	Compressed air to ISO 8573-1:2010 [7:4:4]
Ambient temperature	-5 °C ... 50 °C
Max. tightening torque for valve mounting	2 Nm
Product weight	305 g
Electrical connection	Type C To DIN EN 175301-803 Without protective earth conductor
Type of mounting	On sub-base
Auxiliary pilot air port 12	Sub-base size 26 mm to ISO 15407-1
Auxiliary pilot air port 14	Sub-base size 26 mm to ISO 15407-1
Pilot exhaust port 82/84	Ducted Not ducted as per standard
Pneumatic connection, port 1	Sub-base size 26 mm to ISO 15407-1
Pneumatic connection, port 2	Sub-base size 26 mm to ISO 15407-1
Pneumatic connection, port 3	Sub-base size 26 mm to ISO 15407-1
Pneumatic connection, port 4	Sub-base size 26 mm to ISO 15407-1
Pneumatic connection, port 5	Sub-base size 26 mm to ISO 15407-1
Pilot control interface	To ISO 15218
Note on materials	RoHS-compliant
Material seals	HNBR NBR
Material housing	Die-cast aluminium
Material screws	Steel Galvanised