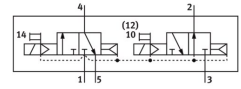


Solenoid valve VSVA-B-T32H-AH-A1-3AC1

Part number: 547212

FESTO



General operating condition

Data sheet

Feature	Value
Valve function	2x3/2-way, open/closed, monostable
Type of actuation	Electric
Valve size	26 mm
Standard nominal flow rate (standardised to DIN 1343)	900 l/min
pneumatic working port	Sub-base size 26 mm to ISO 15407-1 Sub-base size 01 to VDMA 24563 G1/4
Operating voltage	230V AC
Operating pressure	0.2 MPa ... 1 MPa
Operating pressure	2 bar ... 10 bar
Design	Piston gate valve
Type of reset	Pneumatic spring
CE mark (see declaration of conformity)	To EU Low Voltage Directive
UKCA marking (see declaration of conformity)	To UK instructions for EMC
Degree of protection	IP65 NEMA 4
Nominal size	9 mm
Exhaust-air function	With flow control option
Sealing principle	Soft
Mounting position	optional
Conforms to standard	ISO 15407-1 VDMA 24563
Manual override	Non-detenting
Type of piloting	Pilot actuated
Pilot air supply	Internal
Flow direction	Non-reversible
Symbol	00992808
lap	Overlap
Signal status display	LED
Pilot pressure	0.3 MPa ... 1 MPa
Pilot pressure	3 bar ... 10 bar
Flow rate of valve	1250 l/min
Flow rate of valve on individual sub-base	1000 l/min
Flow rate of pneumatically interlinked valve	900 l/min
Switching time off	28 ms
Switching time on	20 ms
Duty cycle	100%

Feature	Value
Characteristic coil data	230 V AC: 50/60 Hz, pick-up power 2.9 VA, holding power 2.1 VA
Permissible voltage fluctuations	-15%/+10%
Operating medium	Compressed air to ISO 8573-1:2010 [7:4:4]
Note on operating and pilot medium	Lubricated operation possible (in which case lubricated operation will always be required)
Vibration resistance	Transport application test with severity level 2 to FN 942017-4 and EN 60068-2-6
Shock resistance	Shock test with severity level 2 to FN 942017-5 and EN 60068-2-27
Corrosion resistance class CRC	0 - No corrosion stress
LABS (PWIS) conformity	VDMA24364-B1/B2-L
Media temperature	-5 °C ... 50 °C
Relative air humidity	0 - 90%
Sound pressure level	85 dB(A)
Pilot medium	Compressed air to ISO 8573-1:2010 [7:4:4]
Ambient temperature	-5 °C ... 50 °C
Max. tightening torque for valve mounting	2 Nm
Product weight	305 g
Electrical connection	Type C With protective earth conductor To DIN EN 175301-803
Type of mounting	On sub-base
Auxiliary pilot air port 12	Sub-base size 26 mm to ISO 15407-1
Auxiliary pilot air port 14	Sub-base size 26 mm to ISO 15407-1
Pilot exhaust port 82/84	Ducted Not ducted as per standard
Pneumatic connection, port 1	Sub-base size 26 mm to ISO 15407-1
Pneumatic connection, port 2	Sub-base size 26 mm to ISO 15407-1
Pneumatic connection, port 3	Sub-base size 26 mm to ISO 15407-1
Pneumatic connection, port 4	Sub-base size 26 mm to ISO 15407-1
Pneumatic connection, port 5	Sub-base size 26 mm to ISO 15407-1
Pilot control interface	To ISO 15218
Note on materials	RoHS-compliant
Material seals	HNBR NBR
Material housing	Die-cast aluminium
Material screws	Steel Galvanised