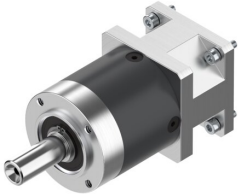


# Gear unit EMGA-40-P-G5-SST-42

Part number: 549429

FESTO



 [General operating condition](#)

## Data sheet

Feature	Value
Gear unit flange size	40 mm
Motor flange size	42 mm
Torsional backlash	0.25 deg
Type of gear unit	Planetary gear
Gear unit ratio	5:1
Max. drive speed	18000 rpm
Operating temperature of gear unit	-25 °C ... 90 °C
LABS (PWIS) conformity	VDMA24364-B2-L
Degree of protection	IP54
Continuous output torque	14 Nm
Mass moment of inertia of gear unit	0.019 kgcm <sup>2</sup>
Max. output torque	22 Nm
Max. efficiency	98 %
Torsional rigidity	1 Nm/arcmin
Product weight	350 g
Gear unit interface, output shaft	40G
Gear unit interface, drive shaft	42A
Note on materials	RoHS-compliant