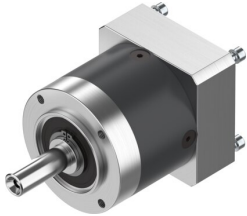


Gear unit EMGA-60-P-G3-SST-57

Part number: 549430

FESTO



 [General operating condition](#)

Data sheet

Feature	Value
Gear unit flange size	60 mm
Motor flange size	57 mm
Torsional backlash	0.17 deg
Type of gear unit	Planetary gear
Gear unit ratio	3:1
Max. drive speed	13000 rpm
Operating temperature of gear unit	-25 °C ... 90 °C
LABS (PWIS) conformity	VDMA24364-B2-L
Degree of protection	IP54
Continuous output torque	22 Nm
Mass moment of inertia of gear unit	0.135 kgcm ²
Max. output torque	35.2 Nm
Max. efficiency	98 %
Torsional rigidity	2.3 Nm/arcmin
Product weight	900 g
Permissible axial shaft load	500 N
Permissible radial shaft load	400 N
Gear unit interface, output shaft	60G
Gear unit interface, drive shaft	57A
Note on materials	RoHS-compliant