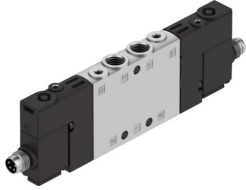


# Solenoid valve CPE14-M1CH-5/3GS-1/8

Part number: 550242

FESTO



[General operating condition](#)

## Data sheet

| Feature                                               | Value                                            |
|-------------------------------------------------------|--------------------------------------------------|
| Valve function                                        | 5/3 closed                                       |
| Type of actuation                                     | Electric                                         |
| Construction width                                    | 14 mm                                            |
| Standard nominal flow rate (standardised to DIN 1343) | 750 l/min                                        |
| pneumatic working port                                | G1/8                                             |
| Operating voltage                                     | 24V DC                                           |
| Operating pressure                                    | -0.09 MPa ... 1 MPa                              |
| Operating pressure                                    | -0.9 bar ... 10 bar                              |
| Design                                                | Piston gate valve                                |
| Type of reset                                         | Mechanical spring                                |
| Approval                                              | c UL us - Recognized (OL)                        |
| Maritime classification                               | See certificate                                  |
| Certificate issuing authority                         | DNV-TAA000032X<br>UL MH19482                     |
| Degree of protection                                  | IP65<br>IP67<br>With plug socket<br>To IEC 60529 |
| Nominal size                                          | 6 mm                                             |
| Exhaust-air function                                  | With flow control option                         |
| Sealing principle                                     | Soft                                             |
| Mounting position                                     | optional                                         |
| Manual override                                       | Detenting via accessory<br>Non-detenting         |
| Type of piloting                                      | Pilot actuated                                   |
| Pilot air supply                                      | External                                         |
| Flow direction                                        | Reversible                                       |
| Symbol                                                | 00991020                                         |
| Valve position code                                   | Inscription label holder                         |
| lap                                                   | Overlap                                          |
| Pilot pressure                                        | 0.3 MPa ... 0.8 MPa                              |
| Pilot pressure                                        | 3 bar ... 8 bar                                  |
| Switching time off                                    | 42 ms                                            |
| Switching time on                                     | 20 ms                                            |
| Duty cycle                                            | 100%                                             |
| Max. positive test pulse with 0 signal                | 1200 µs                                          |
| Max. negative test pulse with 1 signal                | 900 µs                                           |

| Feature                            | Value                                                                                      |
|------------------------------------|--------------------------------------------------------------------------------------------|
| Characteristic coil data           | 24 V DC: 1.28 W                                                                            |
| Permissible voltage fluctuations   | -15%/+10%                                                                                  |
| Operating medium                   | Compressed air to ISO 8573-1:2010 [7:4:4]                                                  |
| Note on operating and pilot medium | Lubricated operation possible (in which case lubricated operation will always be required) |
| Vibration resistance               | Transport application test with severity level 2 to FN 942017-4 and EN 60068-2-6           |
| Shock resistance                   | Shock test with severity level 2 to FN 942017-5 and EN 60068-2-27                          |
| Corrosion resistance class CRC     | 2 - Moderate corrosion stress                                                              |
| LABS (PWIS) conformity             | VDMA24364-B1/B2-L                                                                          |
| Media temperature                  | -5 °C ... 50 °C                                                                            |
| Pilot medium                       | Compressed air to ISO 8573-1:2010 [7:4:4]                                                  |
| Ambient temperature                | -5 °C ... 50 °C                                                                            |
| Max. tightening torque connector   | 0.4 Nm                                                                                     |
| Product weight                     | 120 g                                                                                      |
| Electrical connection              | M8x1                                                                                       |
| Type of mounting                   | With through-hole                                                                          |
| Pilot exhaust port 82              | M3                                                                                         |
| Pilot exhaust port 84              | M3                                                                                         |
| Pilot air port 12                  | M3                                                                                         |
| Pilot air port 14                  | M3                                                                                         |
| Pneumatic connection, port 1       | G1/8                                                                                       |
| Pneumatic connection, port 2       | G1/8                                                                                       |
| Pneumatic connection, port 3       | G1/8                                                                                       |
| Pneumatic connection, port 4       | G1/8                                                                                       |
| Pneumatic connection, port 5       | G1/8                                                                                       |
| Note on materials                  | RoHS-compliant                                                                             |
| Material seals                     | NBR                                                                                        |
| Material housing                   | Die-cast aluminium                                                                         |