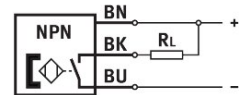
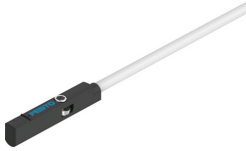


Proximity sensor SMT-10M-NS-24V-E-2,5-L-OE

Part number: 551377

FESTO



 [General operating condition](#)

Data sheet

Feature	Value
Design	For C-slot
Conforms to standard	EN 60947-5-2
Symbol	00991149
Approval	RCM trademark
CE mark (see declaration of conformity)	To EU EMC Directive In accordance with EU RoHS Directive
UKCA marking (see declaration of conformity)	To UK RoHS instructions
Special characteristics	Oil resistant
Note on materials	RoHS-compliant Free of halogen
Instructions on use	https://www.festo.com/Drive-Sensor-Overview
Measured variable	Position
Measuring principle	Magneto-resistive
Ambient temperature	-40 °C ... 70 °C
Repetition accuracy	0.2 mm
Switching output	NPN
Switching element function	N/O contact
Switch-on time	≤1.3 ms
Switch-off time	4.2 ms ... 7.3 ms
Max. switching frequency	130 Hz
Max. output current	100 mA
Max. output current using mounting kits	50 mA
Max. switching capacity DC	2.8 W
Max. switching capacity DC using mounting kits	1.5 W
Voltage drop	≤1.5 V
Off-state current	<0.15 mA
Short circuit current rating	yes
Overload protection	Yes
Rated operational voltage DC	24 V
Operational voltage range DC	5 V ... 30 V
Residual ripple	10 %
Reverse polarity protection	For all electrical connections
Electrical connection 1, connection type	Cable
Electrical connection 1, connector system	Open end
Electrical connection 1, number of connections/cores	3
Connection outlet orientation	In-line

Feature	Value
Test conditions cable	Bending strength: to Festo standard Test conditions on request Torsional strength: > 300,000 cycles, ±270°/0.1 m Energy chain: > 5 million cycles, bending radius 28 mm
Cable length	2.5 m
Cable characteristic	Suitable for energy chains/robot applications
Cable sheath colour	Grey
Material cable sheath	TPE-U(PUR)
Material insulating sheath	PP
Wire ends	Wire ferrule
Type of mounting	Screw-clamped Insertable in the slot from above
Max. tightening torque	0.4 Nm
Mounting position	optional
Product weight	16.8 g
Housing colour	Black
Material housing	High-alloy stainless steel
Switching status indication	Yellow LED
Ambient temperature with moving cable	-20 °C ... 70 °C
Degree of protection	IP65 IP68
LABS (PWIS) conformity	VDMA24364-B2-L
Suitability for the production of Li-ion batteries	Suitable for battery production with reduced Cu/Zn/Ni values (F1a)
Cleanroom suitability, measured according to ISO 14644-14	Element installed statically, no meaningful evaluation possible according to ISO 14644-1