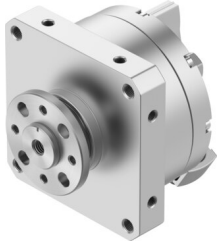


Semi-rotary drive DSM-63-270-P-FW-A-B

Part number: 552080

FESTO



 General operating condition

Data sheet

| Feature | Value |
|--|--|
| Size | 63 |
| Cushioning angle | 2 deg |
| Rotation angle adjustment range | 0 deg ... 270 deg |
| Swivel angle | 0 deg ... 270 deg |
| Permissible stop radius | ≥50 mm |
| Cushioning | Elastic cushioning rings/plates at both ends |
| Mounting position | optional |
| Fine adjustment | -6 deg |
| Mode of operation | Double-acting |
| Design | Vane |
| Position detection | Via proximity switch |
| Symbol | 00991265 |
| Operating pressure | 0.15 MPa ... 1 MPa |
| Operating pressure | 1.5 bar ... 10 bar |
| Max. swivel frequency at 0.6 MPa (6 bar, 87 psi) | 1.6 Hz |
| Repetition accuracy | 1 deg |
| Operating medium | Compressed air to ISO 8573-1:2010 [7:-:-] |
| Note on operating and pilot medium | Lubricated operation possible (in which case lubricated operation will always be required) |
| Corrosion resistance class CRC | 0 - No corrosion stress |
| LABS (PWIS) conformity | VDMA24364-B1/B2-L |
| Ambient temperature | -10 °C ... 60 °C |
| Max. stop force | 1050 N |
| Max. axial force | 500 N |
| Max. radial force | 500 N |
| Theoretical torque at 0.6 MPa (6 bar, 87 psi) | 40 Nm |
| Permissible mass moment of inertia | 0.15 kgm ² |
| Product weight | 5150 g |
| Type of mounting | Via female thread |
| Pneumatic connection | G1/4 |
| Note on materials | RoHS-compliant |
| Material drive shaft | Steel Nickel-plated |
| Material seals | TPE-U(PU) |
| Material housing | Anodised aluminium |