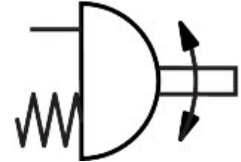


Quarter turn actuator DAPS-0030-090-RS1-F0305-CR

Part number: 552879

FESTO



 [General operating condition](#)

Data sheet

| Feature | Value |
|--|--|
| Size of valve actuator | 0030 |
| Flange hole pattern | F03 F05 |
| Swivel angle | 90 deg |
| Shaft connection depth | 12.1 mm |
| Fitting connection conforms to standard | ISO 5211 |
| Cushioning | No cushioning |
| Mounting position | optional |
| Mode of operation | Single-acting |
| Design | Scotch yoke system |
| Position detection | Without |
| Closing direction | Closes to the right |
| Symbol | 00991266 |
| Valve connection conforms to standard | VDI/VDE 3845 (NAMUR) |
| Safety Integrity Level (SIL) | Up to SIL 2 High Demand mode To SIL 2 Low Demand mode |
| Supply pressure for spring strength | 0.28 MPa |
| Supply pressure for spring strength | 2.8 bar |
| Operating pressure | 0.28 MPa ... 0.84 MPa |
| Operating pressure | 2.8 bar ... 8.4 bar |
| Nominal operating pressure | 0.56 MPa |
| Nominal operating pressure | 5.6 bar |
| CE mark (see declaration of conformity) | To EU Explosion Protection Directive (ATEX) |
| UKCA marking (see declaration of conformity) | To UK EX instructions |
| Explosion protection | Zone 1 (ATEX) Zone 2 (ATEX) Zone 21 (ATEX) Zone 22 (ATEX) |
| Certificate issuing authority | German Technical Control Board North (TÜV Nord) 212170801 |
| ATEX category gas | II 2G |
| ATEX category dust | II 2D |
| Explosion ignition protection type for gas | Ex h IIC T6...T3 Gb X |
| Explosion ignition protection type for dust | Ex h IIIC T85°C...T200°C Db X |
| Explosion ambient temperature | -20°C ≤ Ta ≤ +60°C |
| Operating medium | Compressed air to ISO 8573-1:2010 [7:4:4] |

| Feature | Value |
|---|--|
| Note on operating and pilot medium | Lubricated operation possible (in which case lubricated operation will always be required) |
| Corrosion resistance class CRC | 3 - high corrosion stress |
| LABS (PWIS) conformity | VDMA24364-B1/B2-L |
| Ambient temperature | -20 °C ... 80 °C |
| Spring return torque at 0° swivel angle | 10 Nm |
| Spring return torque at 50° swivel angle | 7.5 Nm |
| Spring return torque at 90° swivel angle | 15 Nm |
| Spring strength | 1 |
| Air consumption at 0.6 MPa (6 bar, 87 psi) per cycle 0°-nominal swivel angle-0° | 1.12 l |
| Product weight | 2400 g |
| Shaft connection | T11 |
| Pneumatic connection | G1/8 |
| Note on materials | RoHS-compliant |
| Material cover | High-alloy stainless steel |
| Material number cover | 1.4408 |
| Material seals | FPM NBR PUR |
| Material housing | High-alloy stainless steel |
| Material number housing | 1.4408 |
| Material screws | High-alloy stainless steel |
| Material shaft | High-alloy stainless steel |
| Material number shaft | 1.4301 |