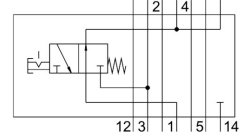
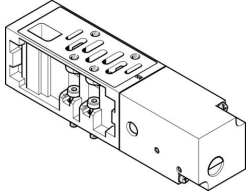


Vertical pressure shut-off plate VABF-S1-2-L1D1-C

FESTO

Part number: 555790



[General operating condition](#)

Data sheet

| Feature | Value |
|---|--|
| Construction width | 54 mm |
| Based on standard | ISO 5599-1 |
| Mounting position | optional |
| Vertical pneumatic linkage | Alternative compressed air supply for 1 |
| Symbol | 00991890 |
| Operating pressure | -0.09 MPa ... 1 MPa |
| Operating pressure | -0.9 bar ... 10 bar |
| Inlet pressure 1 | 0.5 bar ... 10 bar |
| Inlet pressure 1 | 0.05 MPa ... 1 MPa |
| Inlet pressure 1 | 7.25 psi ... 145 psi |
| Standard nominal flow rate (standardised to DIN 1343) | 1950 l/min |
| Operating medium | Compressed air to ISO 8573-1:2010 [7:4:4] |
| Note on operating and pilot medium | Lubricated operation possible (in which case lubricated operation will always be required) |
| Corrosion resistance class CRC | 0 - No corrosion stress |
| LABS (PWIS) conformity | VDMA24364-B1/B2-L |
| Degree of protection | IP65 NEMA 4 |
| Ambient temperature | -5 °C ... 50 °C |
| Product weight | 1030 g |
| Mounting with vertical stacking | On manifold sub-base On individual sub-base |
| Note on materials | RoHS-compliant |
| Material housing | Die-cast aluminium |